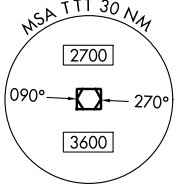


RADAR and DME required.

**TOP ALTITUDE:  
ASSIGNED BY ATC**

LONE STAR DEP CON  
124.3 282.275  
CLNC DEL (When twr closed)  
121.35  
GND CON  
121.875  
MC KINNEY TOWER★  
118.825 (CTAF)



(WORTH1.TTT) 24305  
WORTH ONE DEPARTURE

AL6644 (FAA)

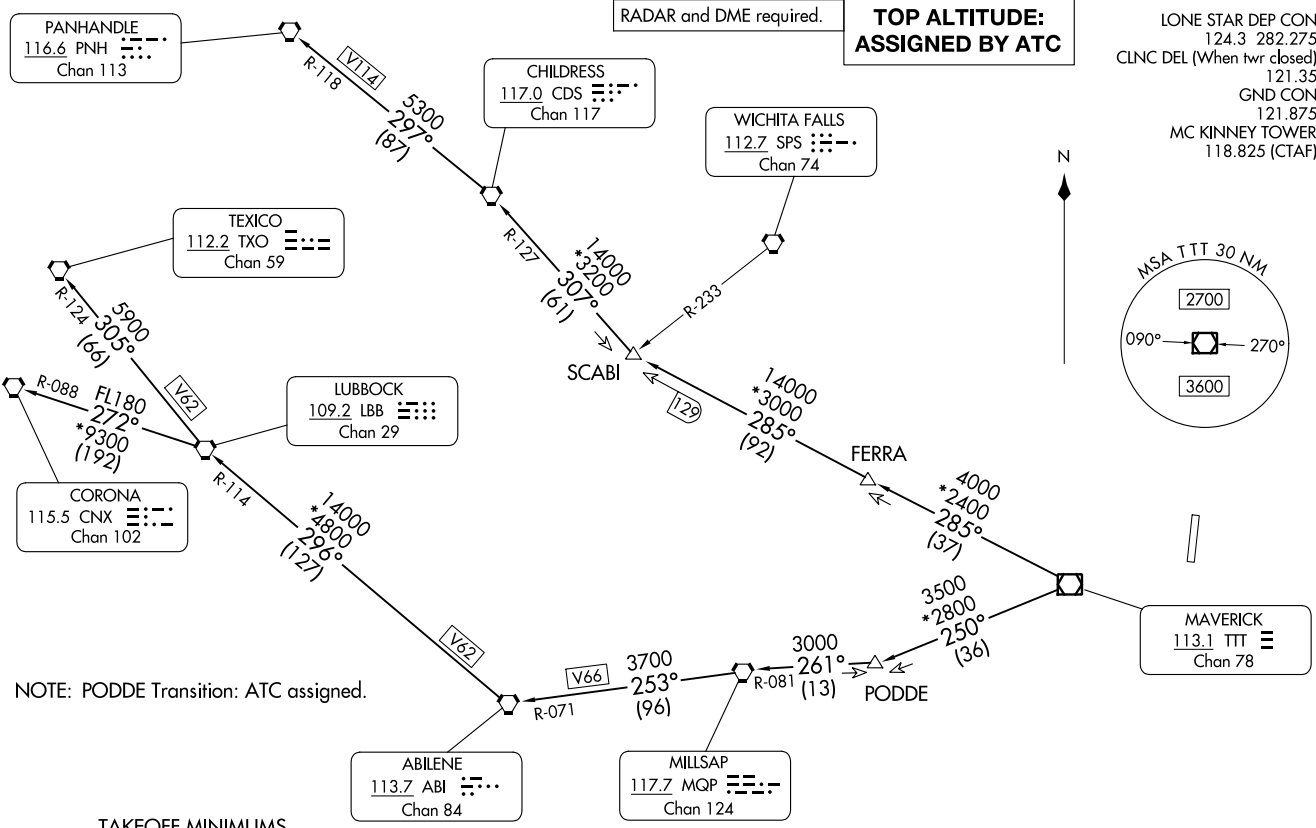
MCKINNEY NTL (TKI)  
DALLAS, TEXAS

NOTE: Chart not to scale.

(CONTINUED ON FOLLOWING PAGE)

WORTH ONE DEPARTURE  
(WORTH1.TTT) 251AN24

DALLAS, TEXAS  
MCKINNEY NTL (TKI)



PANHANDLE  
116.6 PNH  
Chan 113

CHILDRESS  
117.0 CDS  
Chan 117

WICHITA FALLS  
112.7 SPS  
Chan 74

TEXICO  
112.2 TXO  
Chan 59

LUBBOCK  
109.2 LBB  
Chan 29

CORONA  
115.5 CNX  
Chan 102

MAVERICK  
113.1 TTT  
Chan 78

ABILENE  
113.7 ABI  
Chan 84

MILLSAP  
117.7 MQP  
Chan 124

NOTE: PODDE Transition: ATC assigned.

TAKEOFF MINIMUMS  
Rwys 18, 36: Standard.

# WORTH ONE DEPARTURE



## DEPARTURE ROUTE DESCRIPTION

When entering controlled airspace, fly assigned heading for RADAR vectors to appropriate route. Maintain ATC assigned altitude.

ABILENE TRANSITION (WORTH1.ABI): From over TTT VOR/DME on TTT R-250 to PODDE, then on MQP R-081 to MQP VORTAC, then on MQP R-253 and ABI R-071 to ABI VORTAC.

CHILDRESS TRANSITION (WORTH1.CDS): From over TTT VOR/DME on TTT R-285 to SCABI, then on CDS R-127 to CDS VORTAC.

CORONA TRANSITION (WORTH1.CNX): From over TTT VOR/DME on TTT R-250 to PODDE, then on MQP R-081 to MQP VORTAC, then on MQP R-253 and ABI R-071 to ABI VORTAC, then on ABI R-296 and LBB R-114 to LBB VORTAC, then on LBB R-272 and CNX R-088 to CNX VORTAC.

LUBBOCK TRANSITION (WORTH1.LBB): From over TTT VOR/DME on TTT R-250 to PODDE, then on MQP R-081 to MQP VORTAC, then on MQP R-253 and ABI R-071 to ABI VORTAC, then on ABI R-296 and LBB R-114 to LBB VORTAC.

PANHANDLE TRANSITION (WORTH1.PNH): From over TTT VOR/DME on TTT R-285 to SCABI, then on CDS R-127 to CDS VORTAC, then on CDS R-297 and PNH R-118 to PNH VORTAC.

PODDE TRANSITION (WORTH1.PODDE): From over TTT VOR/DME on TTT R-250 to PODDE.

TEXICO TRANSITION (WORTH1.TXO): From over TTT VOR/DME on TTT R-250 to PODDE, then on MQP R-081 to MQP VORTAC, then on MQP R-253 and ABI R-071 to ABI VORTAC, then on ABI R-296 and LBB R-114 to LBB VORTAC, then on LBB R-305 and TXO R-124 to TXO VORTAC.

SC-2, 28 NOV 2024 to 26 DEC 2024

SC-2, 28 NOV 2024 to 26 DEC 2024

# WORTH ONE DEPARTURE

(WORTH1.TTT) 25JAN24