

(BNYRD6.BNYRD) 18144

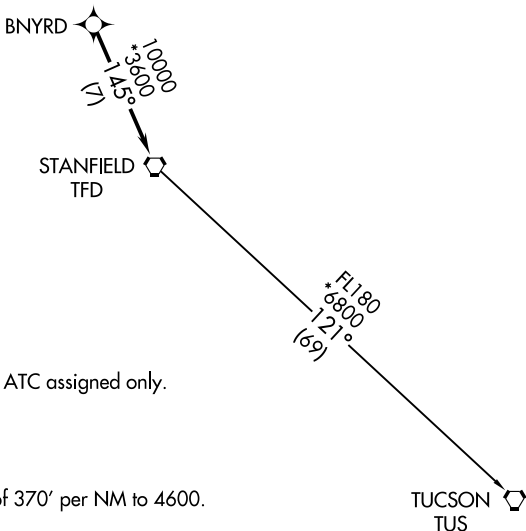
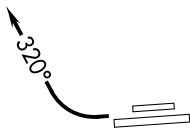
# BNYRD SIX DEPARTURE (RNAV)

AL-6646 (FAA)

PHOENIX DEER VALLEY (DVT)  
PHOENIX, ARIZONA

**TOP ALTITUDE:  
ASSIGNED BY ATC**

- ATIS 126.5
- CLNC DEL 123.9
- GND CON 121.8
- DEER VALLEY TOWER\* 118.4 (Rwy 7R-25L)
- 120.2 (Rwy 7L-25R)
- PHOENIX DEP CON 120.7 239.0



- NOTE: RNAV 1.
- NOTE: Turbojets and turboprops only.
- NOTE: RADAR required.
- NOTE: GPS required.
- NOTE: Aircraft departing KGEU and KGYR ATC assigned only.

### TAKEOFF MINIMUMS

- Rwys 7L/R: NA - Obstacles.
- Rwys 25L/R: Standard with minimum climb of 370' per NM to 4600.

NOTE: Chart not to scale.



### DEPARTURE ROUTE DESCRIPTION

TAKEOFF RUNWAYS 25L/R: Climbing right turn heading 320° or as assigned by ATC, thence . . . . .  
 . . . . .expect RADAR vectors to BNYRD, then on track 145° to TFD VORTAC, then on (transition), maintain ATC assigned altitude, expect filed altitude 3 minutes after departure.

### TUCSON TRANSITION (BNYRD6.TUS)

# BNYRD SIX DEPARTURE (RNAV)

(BNYRD6.BNYRD) 24MAY18

PHOENIX, ARIZONA  
PHOENIX DEER VALLEY (DVT)

SW-4, 28 NOV 2024 to 26 DEC 2024

SW-4, 28 NOV 2024 to 26 DEC 2024