

| | | |
|--|------------------------|---|
| WAAS CH 57917 W01A | APP CRS 008° | Rwy Idg TDZE 969 Apt Elev 969 |
|--|------------------------|---|

RNAV (GPS) RWY 1

LAFAYETTE MUNI (3M7)

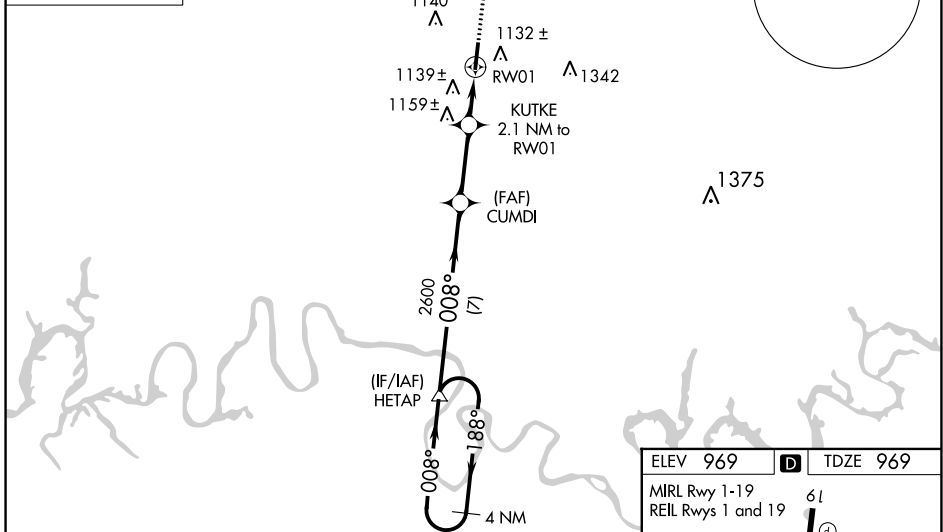
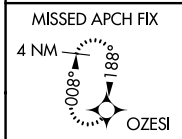
RNP APCH - GPS.

▼ For uncompensated Baro-VNAV systems, LNAV/VNAV NA below -16°C or above 47°C.
▲ NA Obtain local altimeter setting on CTAF; when not received, use Bowling Green altimeter setting: increase LPV DA to 1441 feet and all visibilities ½ SM; increase LNAV/VNAV DA to 1585 feet and all visibilities ½ SM; increase all MDAs 140 feet and visibility LNAV Cat C and D ¼ SM and Circling Cat C and D ½ SM. VDP and Baro-VNAV NA when using Bowling Green altimeter setting. Rwy 1 helicopter visibility reduction below ¾ SM NA.

MISSED APPROACH:
Climb to 3000 direct OZESI and hold.

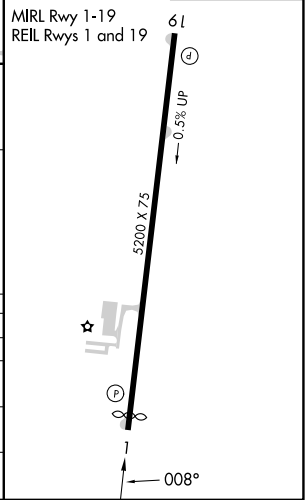
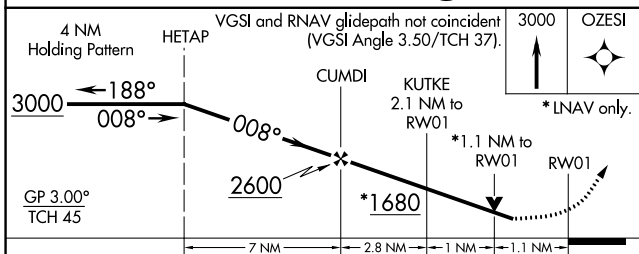
NASHVILLE APP CON
118.4 360.7

UNICOM
122.8 (CTAF) 0



ELEV 969 **D** TDZE 969

MIRL Rwy 1-19
REIL Rws 1 and 19



| CATEGORY | A | B | C | D |
|--------------|--------|-------------|-------------------------|-------------------------|
| LPV DA | | 1318-1¼ | 349 (400-1¼) | |
| LNAV/VNAV DA | | 1452-1¾ | 483 (500-1¾) | |
| LNAV MDA | 1400-1 | 431 (500-1) | 1400-1¼ 431 (500-1¼) | 1400-1½ 431 (500-1½) |
| CIRCLING | 1440-1 | 471 (500-1) | 1600-1¾ 631 (700-1¾) | 1700-2¼ 731 (800-2¼) |

SE-1, 28 NOV 2024 to 26 DEC 2024

SE-1, 28 NOV 2024 to 26 DEC 2024