

APP CRS	Rwy ldg	<b>5501</b>
<b>125°</b>	TDZE	<b>431</b>
	Apt Elev	<b>439</b>

# RNAV (GPS) RWY 13

KAOLIN FLD (OKZ)

RNP APCH - GPS.

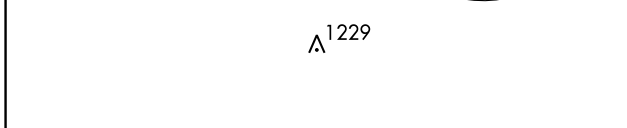
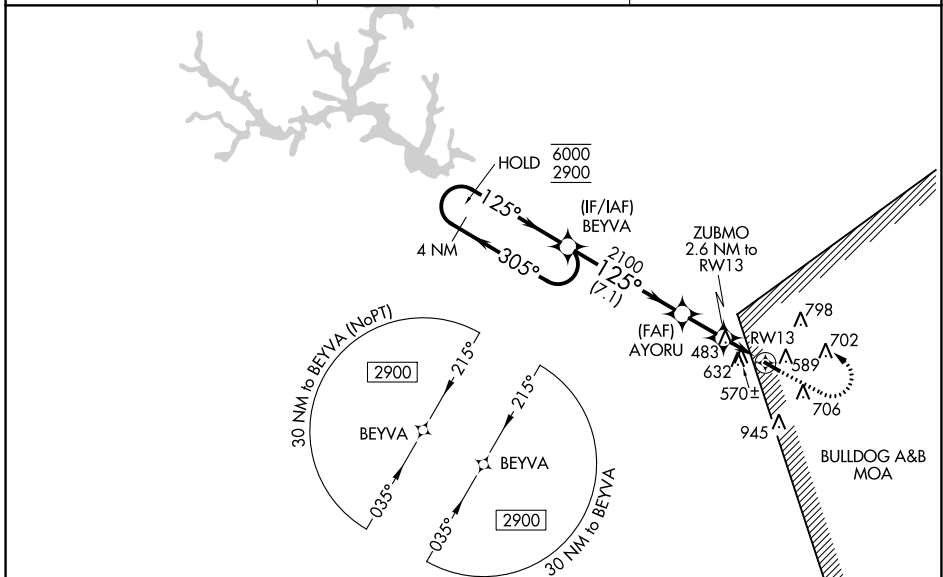
**⚠** Rwy 13 helicopter visibility reduction below 1 SM NA.  
Straight-in Rwy 13 NA at night, Circling Rwy 13 NA at night.

MISSED APPROACH: Climb to 1100 then climbing left turn to 2900 direct BEYVA and hold.

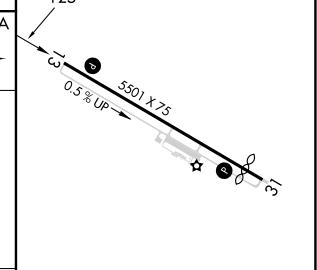
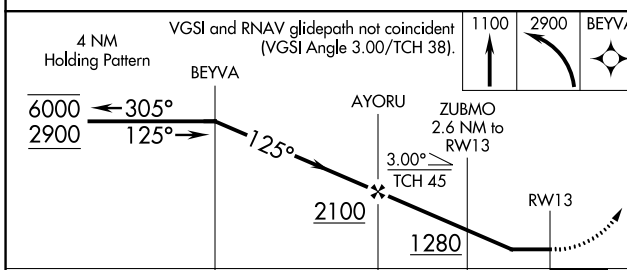
AWOS-3  
**120.575**

ATLANTA APP CON ★  
**124.2 279.6**

UNICOM  
**123.0 (CTAF)** **📻**



ELEV	<b>439</b>	<b>D</b>	TDZE	<b>431</b>
------	------------	----------	------	------------



CATEGORY	A	B	C	D
LNVA MDA	820-1	389 (400-1)	820-1 <sup>1</sup> / <sub>8</sub> 389 (400-1 <sup>1</sup> / <sub>8</sub> )	NA
<b>C</b> CIRCLING	1000-1 561 (600-1)	1120-1 681 (700-1)	1240-2 <sup>1</sup> / <sub>4</sub> 801 (900-2 <sup>1</sup> / <sub>4</sub> )	NA

REIL Rwy 13 **📻**  
MIRL Rwy 13-31 **📻**

SE-4, 28 NOV 2024 to 26 DEC 2024

SE-4, 28 NOV 2024 to 26 DEC 2024