

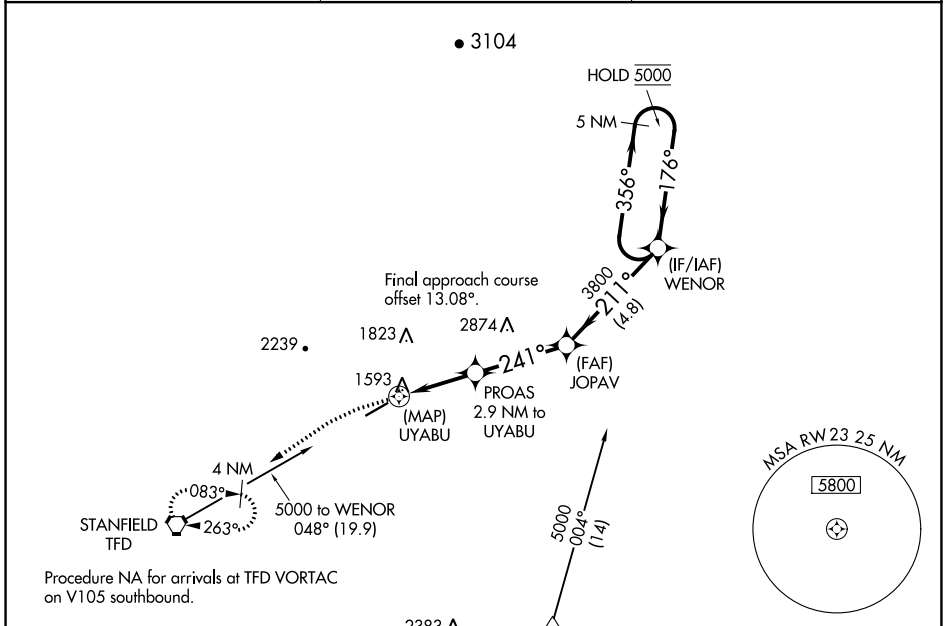
APP CRS	Rwy Idg	5200
241°	TDZE	1464
	Apt Elev	1464

RNAV (GPS) RWY 23

CASA GRANDE MUNI (CGZ)

RNP APCH-GPS.	MISSED APPROACH: Climbing left turn to 3500 direct TFD VORTAC and hold.
<p>▼ Rwy 23 helicopter visibility reduction below 3/4 SM NA.</p> <p>▲ Circling NA for Cat C and D northwest of Rwy 5-23.</p>	

AWOS-3PT 132.175	ALBUQUERQUE CENTER 125.4 269.3	UNICOM 122.7 (CTAF) 0
----------------------------	------------------------------------------	---------------------------------



ELEV 1464	TDZE 1464
-----------	-----------

Procedure NA for arrivals at TFD VORTAC on V105 southbound.

Procedure NA for arrivals at TOTEC on V16/T306 southeast bound.

<p>3500 TFD</p> <p>0.8 NM to UYABU</p> <p>2640</p> <p>2.1 NM</p> <p>PROAS 2.9 NM to UYABU</p> <p>3.19° TCH 40</p> <p>3800</p> <p>241°</p> <p>JOPAV</p> <p>4.8 NM</p> <p>356°</p> <p>176°</p> <p>5000</p> <p>5 NM Holding Pattern</p> <p>WENOR</p>						
<table border="1"> <tr> <td>0.5</td> <td>0.8</td> <td>2.1 NM</td> <td>3.4 NM</td> <td>4.8 NM</td> </tr> </table>	0.5	0.8	2.1 NM	3.4 NM	4.8 NM	
0.5	0.8	2.1 NM	3.4 NM	4.8 NM		
CATEGORY	A	B	C	D		
LNAV MDA	1900-1	436 (500-1)	1900-1 1/4	436 (500-1 1/4)		
C CIRCLING	1960-1	496 (500-1)	1960-1 1/2	2260-2 1/2		
			496 (500-1 1/2)	796 (800-2 1/2)		

MIRL Rwy 5-23

SW-4, 28 NOV 2024 to 26 DEC 2024

SW-4, 28 NOV 2024 to 26 DEC 2024