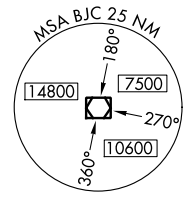
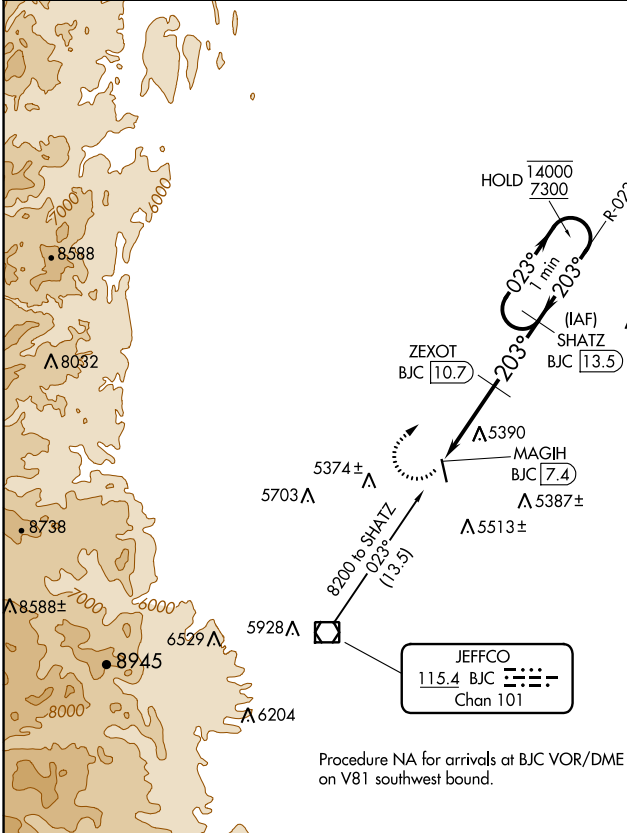


VOR/DME BJC 115.4 Chan 101	APP CRS 203°	Rwy Idg TDZE Apt Elev	N/A N/A 5119
--	------------------------	-----------------------------	---

VOR-A
ERIE MUNI (EIK)

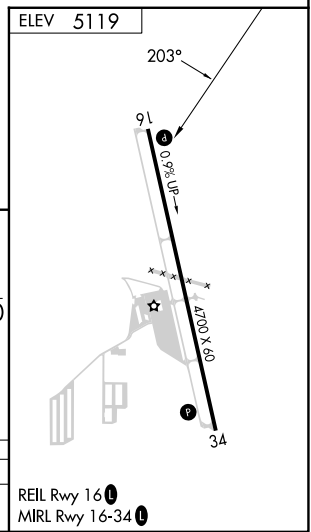
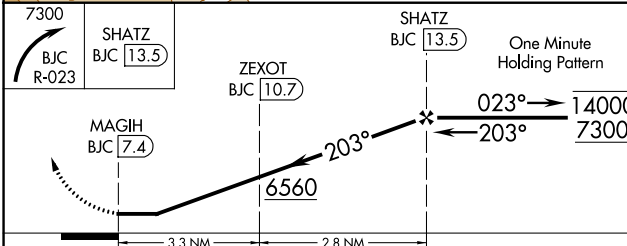
DME required. MISSED APPROACH: Climbing right turn to 7300 on BJC VOR/DME R-023 to SHATZ/13.5 DME and hold, continue climb-in-hold to 7300.

AWOS-3PT 133.825	DENVER APP CON 125.12 263.02	UNICOM 123.0 (CTAF)
----------------------------	--	-------------------------------



JEFFCO
115.4 BJC
Chan 101

Procedure NA for arrivals at BJC VOR/DME on V81 southwest bound.



CATEGORY	A	B	C	D
CIRCLING	5700-1 581 (600-1)	5880-1 761 (800-1)	5880-2¼ 761 (800-2¼)	NA

SW-1, 28 NOV 2024 to 26 DEC 2024

SW-1, 28 NOV 2024 to 26 DEC 2024