

APP CRS	Rwy Idg	5001
088°	TDZE	1389
	Apt Elev	1395

RNAV (GPS) RWY 9

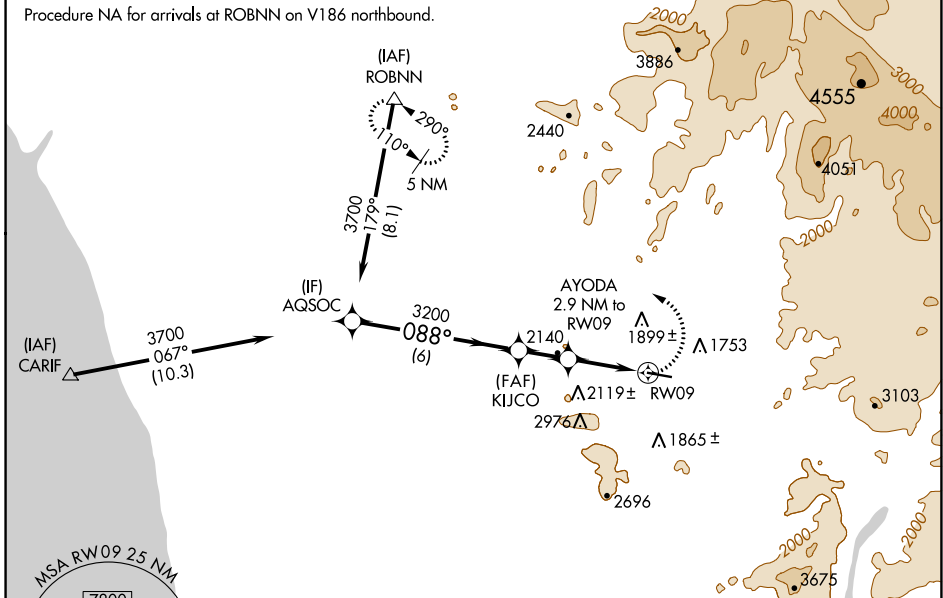
RAMONA (R.NM)

⚠ Circling NA north of Rwy 9-27. Circling NA for Cat C when using Gillespie Fld altimeter setting. DME/DME RNP -0.3 NA. LNAV minima NA when using Gillespie Fld altimeter setting. When local altimeter setting not received, use Gillespie Fld altimeter setting and increase all Circling MDA 180 feet and increase Circling visibility Cat B ¼ SM. Helicopter visibility reduction below ¾ SM NA.

⚠ MISSED APPROACH: Climbing left turn to 5000 direct ROBNN and hold.

ATIS 132.025	SOCAL APP CON 132.2 269.1	RAMONA TOWER ★ 119,875 (CTAF) 0	GND CON 121.65	UNICOM 122.95
------------------------	-------------------------------------	---	--------------------------	-------------------------

Procedure NA for arrivals at ROBNN on V186 northbound.



SW-3, 28 NOV 2024 to 26 DEC 2024

SW-3, 28 NOV 2024 to 26 DEC 2024

ELEV 1395	TDZE 1389
-----------	-----------

