

BORRN SIX DEPARTURE (RNAV)
(BORRN6.BORRN) 30NOV23

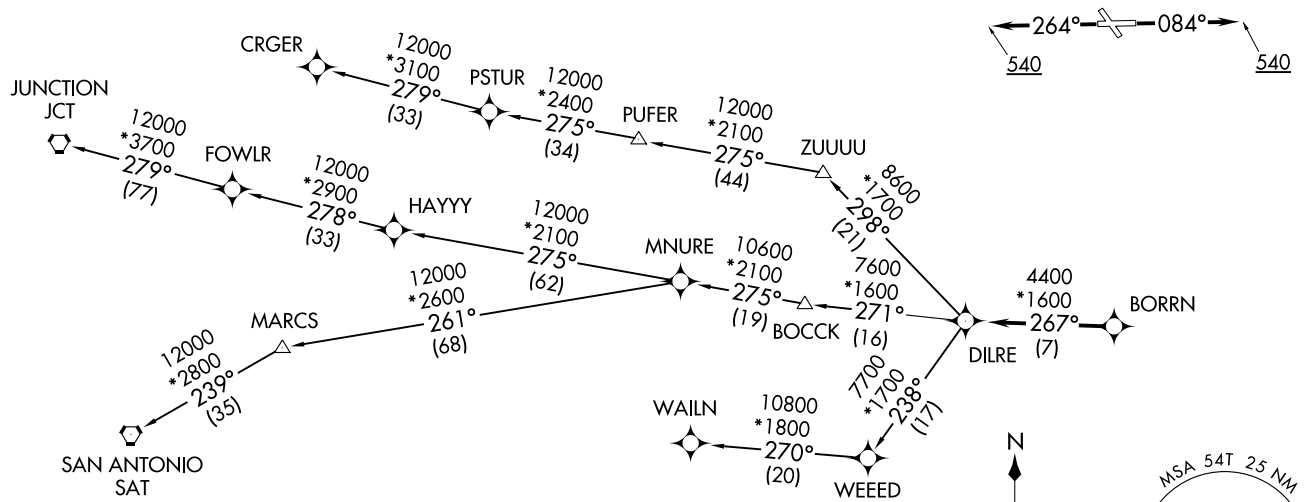
BAYTOWN, TEXAS
RWJ AIRPARK (54T)

CTAF
122.7
HOUSTON DEP CON
134.45 284.0

RNAV 1 - DME/DME/IRU or GPS.
RADAR required.

**TOP ALTITUDE:
ASSIGNED BY ATC**

TAKEOFF MINIMUMS
Rwys 14, 32: NA - Environmental.
Rwys 8, 26: Standard with minimum climb
of 500'/NM to 540.



NOTE: CRGER-TRANSITION ATC assigned only for aircraft departing 54T, AXH, EFD, GLS, HPY, IWS, LBX, LVJ, SGR, TME, T00, T41.

(NARRATIVE ON FOLLOWING PAGE)

NOTE: Chart not to scale.

(BORRN6.BORRN) 23334
BORRN SIX DEPARTURE (RNAV)

AL6674 (FAA)

RWJ AIRPARK (54T)
BAYTOWN, TEXAS

BORRN SIX DEPARTURE (RNAV)



DEPARTURE ROUTE DESCRIPTION

TAKEOFF RUNWAY 8: Climb on heading 084° to 540, for RADAR vectors to BORRN, thence. . . .

TAKEOFF RUNWAY 26: Climb on heading 264° to 540, for RADAR vectors to BORRN, thence. . . .

. . . .on track 267° to DILRE, then on (transition). Maintain ATC assigned altitude. Expect filed altitude 10 minutes after departure.

CRGER TRANSITION (BORRN6.CRGER)

JUNCTION TRANSITION (BORRN6.JCT)

MNURE TRANSITION (BORRN6.MNURE)

SAN ANTONIO TRANSITION (BORRN6.SAT)

WAILN TRANSITION (BORRN6.WAILN)

SC-5, 28 NOV 2024 to 26 DEC 2024

SC-5, 28 NOV 2024 to 26 DEC 2024