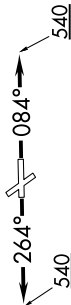


MMALT SEVEN DEPARTURE (RNAV)

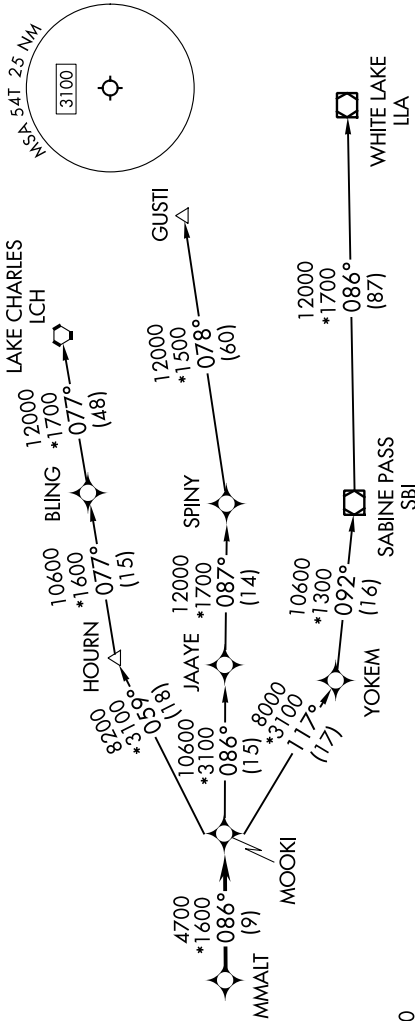
SC-5, 28 NOV 2024 to 26 DEC 2024

RNAV 1 - DME/DME/IRU or GPS.
RADAR required.

HOUSTON DEP CON
134.45 284.0
CTAF
122.7



**TOP ALTITUDE:
ASSIGNED BY ATC**



LAKE CHARLES
LCH

12000
*1700
077°
(48)

10600
*1600
077°
(15)

8000
*1000
058°
(11)

4700
*1600
086°
(9)

10600
*3100
086°
(15)

12000
*1700
087°
(14)

10600
*1300
092°
(16)

12000
*1500
078°
(60)

12000
*1700
086°
(87)

12000
*1700
086°
(87)

WHITE LAKE
LLA



NOTE: GUSTI and LCH Transitions ATC assigned only for aircraft departing AXH, EFD, GLS, HPY, IWS, LBX, LVJ, SGR, TME, T00, T41 and 54T.

DEPARTURE ROUTE DESCRIPTION

TAKEOFF MINIMUMS
Rwys 14, 32: NA-Environmental.
Rwys 8, 26: Standard with minimum climb of 500'/NM to 540.

TAKEOFF RUNWAY 8: Climb on heading 084° to 540, for RADAR vectors to MMALT, thence. . . .
TAKEOFF RUNWAY 26: Climb on heading 264° to 540, for RADAR vectors to MMALT, thence. . . .
... on track 086° to MOOKI, then on (transition). Maintain ATC assigned altitude.
Expect filed altitude 10 minutes after departure.

- GUSTI TRANSITION (MMALT7.GUSTI)
- LAKE CHARLES TRANSITION (MMALT7.LCH)
- WHITE LAKE TRANSITION (MMALT7.LLA)

NOTE: Chart not to scale.

MMALT SEVEN DEPARTURE (RNAV)