

(STYCK8.STYCK) 21280

AL-6674 (FAA)

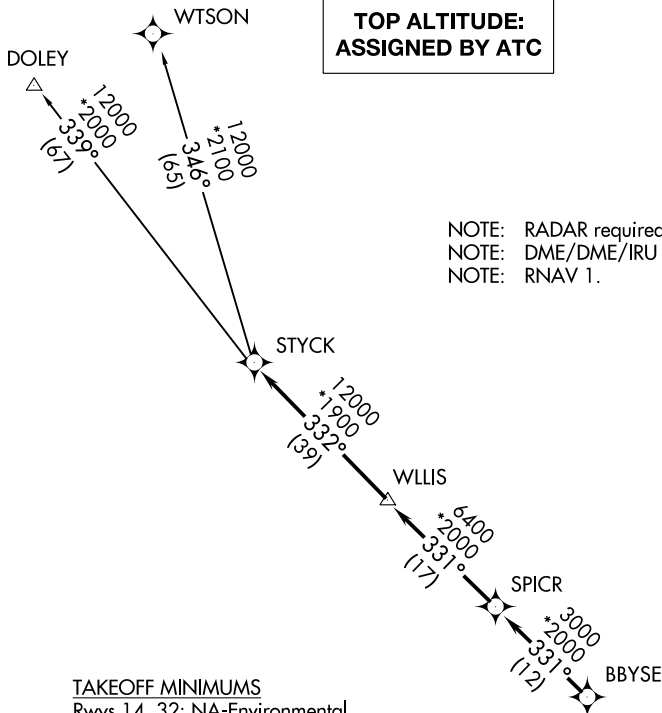
RWJ AIRPARK (54T)

# STYCK EIGHT DEPARTURE (RNAV)

BAYTOWN, TEXAS

**TOP ALTITUDE:  
ASSIGNED BY ATC**

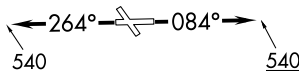
CTAF  
122.7  
HOUSTON DEP CON  
134.45 284.0



NOTE: RADAR required.  
NOTE: DME/DME/IRU or GPS required.  
NOTE: RNAV 1.

### TAKEOFF MINIMUMS

Rwys 14, 32: NA-Environmental.  
Rwys 8, 26: Standard with minimum  
climb of 500' per NM to 540.



### DEPARTURE ROUTE DESCRIPTION

**TAKEOFF RUNWAY 8:** Climb on heading 084° to 540 for RADAR vectors to BBYSE, thence. . .  
**TAKEOFF RUNWAY 26:** Climb on heading 264° to 540 for RADAR vectors to BBYSE, thence. . .

. . .on track 331° to SPICR, then on track 331° to WLLIS, then on track 332° to STYCK, then on (transition). Maintain ATC assigned altitude. Expect filed altitude 10 minutes after departure.

DOLEY TRANSITION (STYCK8.DOLEY)  
WTSON TRANSITION (STYCK8.WTSON)

NOTE: Chart not to scale.

# STYCK EIGHT DEPARTURE (RNAV)

(STYCK8.STYCK) 07OCT21

BAYTOWN, TEXAS

RWJ AIRPARK (54T)

SC-5, 28 NOV 2024 to 26 DEC 2024

SC-5, 28 NOV 2024 to 26 DEC 2024