

APP CRS	Rwy Idg	<b>5211</b>
<b>135°</b>	TDZE	<b>76</b>
	Apt Elev	<b>76</b>

# RNAV (GPS) RWY 13

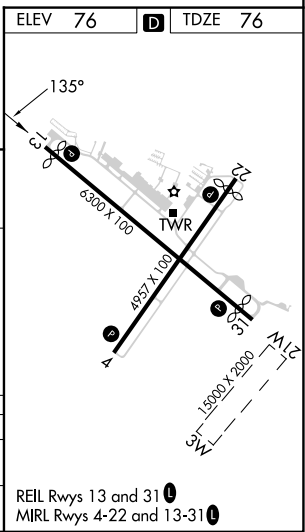
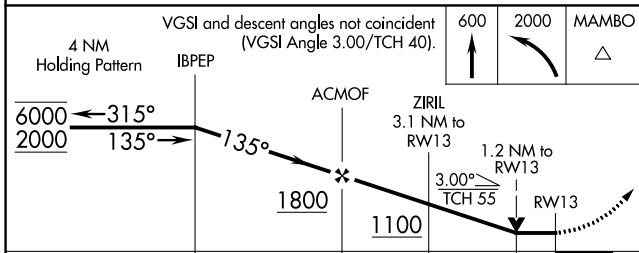
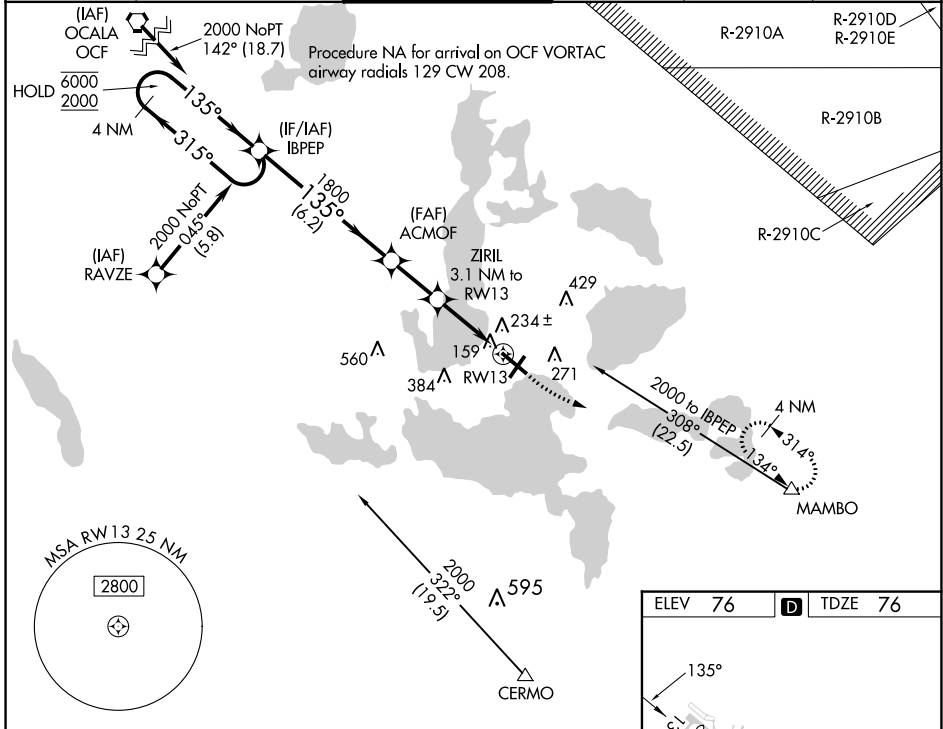
LEESBURG INTL (L.E.E)

RNP APCH - GPS.

⚠ Circling NA to Rws 3W and 21W. Rwy 13 helicopter visibility reduction below 3/4 SM NA.  
 ⚠ VDP NA when using Orlando Intl altimeter setting. When local altimeter setting not received, use Orlando Intl altimeter setting and increase all MDAs 100 feet and LNAV visibility Cat C/D 1/4 SM, and Circling visibility Cat C/D 1/4 SM. Circling Rwy 4, 22 NA at night.

MISSED APPROACH: Climb to 600 then climbing left turn to 2000 direct MAMBO and hold.

ATIS <b>134.325</b>	ORLANDO APP CON <b>135.3 351.9</b>	LEESBURG TOWER ★ <b>119.35 (CTAF) 0</b>	GND CON <b>121.725</b>	CLNC DEL <b>120.225</b> (When twr closed)	UNICOM <b>122.725</b>
------------------------	---------------------------------------	--	---------------------------	---	--------------------------



CATEGORY	A	B	C	D
LNAV MDA	500-1	424 (500-1)	500-1 1/4	424 (500-1 1/4)
CIRCLING	700-1	624 (700-1)	780-2 704 (800-2)	780-2 1/4 704 (800-2 1/4)

SE-3, 28 NOV 2024 to 26 DEC 2024

SE-3, 28 NOV 2024 to 26 DEC 2024