

SC-3, 28 NOV 2024 to 26 DEC 2024

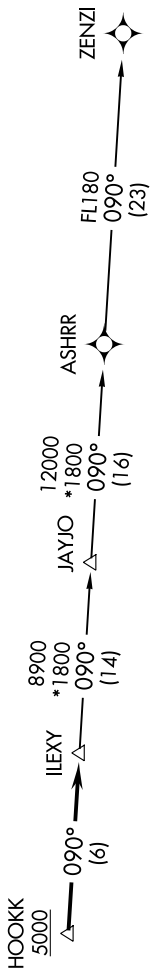
UNICOM (CTAF)
123.0
AUSTIN DEP CON
119.0 370.85

RNAV 1- DME/DME/IRU or GPS.
RADAR required.

TOP ALTITUDE:
ASSIGNED BY ATC

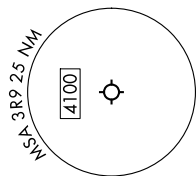
TAKEOFF MINIMUMS:

Rwy 16: 500-2³/₄ or Standard with minimum climb of 265' per NM to 1500.
Rwy 34: Standard.



NOTE: Houston terminal area arrivals expect routing from ILEXY.
NOTE: JAYJO transition to join V306 only.
NOTE: Takeoff Rwy 16 requires a climb to 1700 on heading 165° prior to turning for obstacle avoidance.
NOTE: Aircraft not destined the Houston terminal area or joining V306 must file the ZENZI transition.

NOTE: Chart not to scale.



DEPARTURE ROUTE DESCRIPTION

TAKEOFF RUNWAY 16: Climb on heading 165° to 1700, then as assigned by ATC for vectors to cross HOOKK at or above 5000, thence. . . .
TAKEOFF RUNWAY 34: Climb on heading 345° or as assigned by ATC for vectors to cross HOOKK at or above 5000, thence. . . .
. . . . on track 090° to ILEXY, then on transition. Maintain altitude assigned by ATC. Expect filed altitude 10 minutes after departure.

JAYJO TRANSITION (ILEXY4.JAYJO)
ZENZI TRANSITION (ILEXY4.ZENZI)

SC-3, 28 NOV 2024 to 26 DEC 2024