

WAAS CH <b>42531</b> <b>W16A</b>	APP CRS <b>165°</b>	Rwy Idg TDZE Apt Elev	<b>3148</b> <b>903</b> <b>909</b>
----------------------------------------	------------------------	-----------------------------	-----------------------------------------

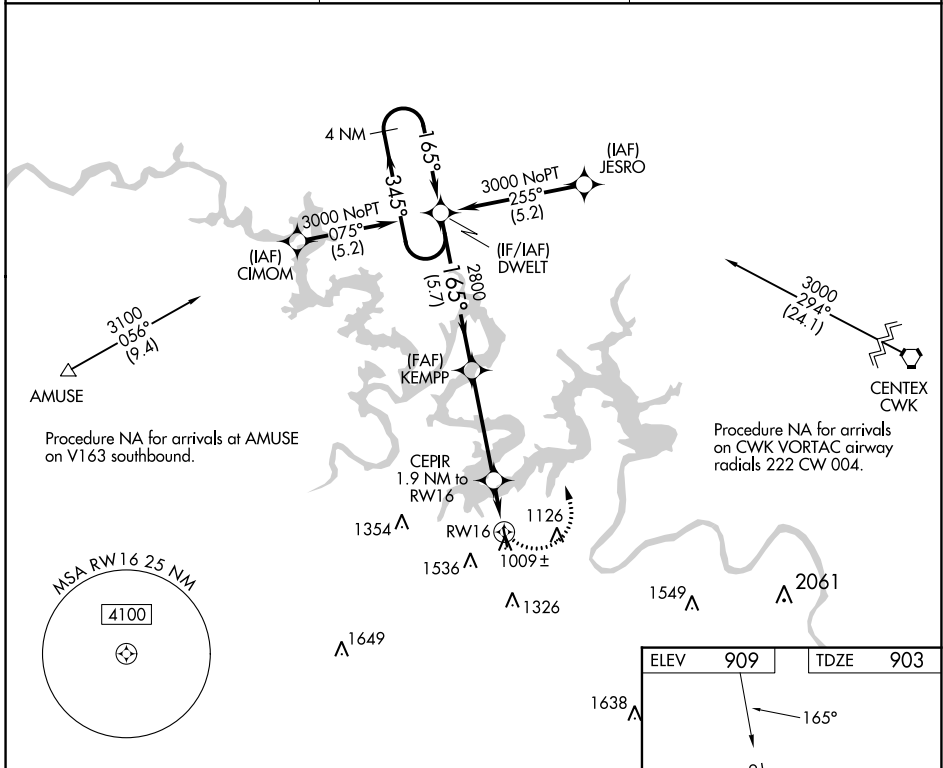
# RNAV (GPS) RWY 16

LAKEWAY AIRPARK (3R.9)

**▼** Rwy 16, 34 helicopter visibility reduction below 1 SM NA.  
**▲** DME/DME RNP-0.3 NA. Procedure NA at night.  
 Use Lago Vista altimeter setting; when not received, use Austin-Bergstrom  
 Intl altimeter setting and increase all MDA 40 feet.

MISSED APPROACH: Climbing left turn to 3000 direct DWELT and hold.

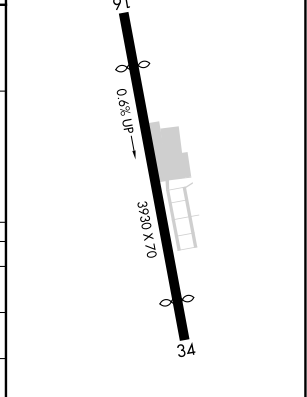
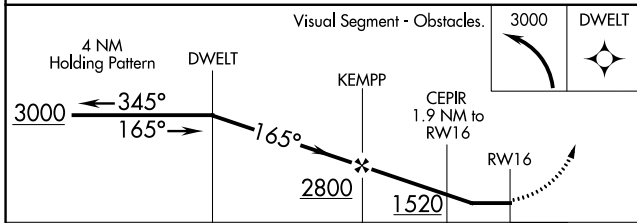
RWY ASOS <b>119.375</b>	AUSTIN APP CON <b>119.0 370.85</b>	UNICOM <b>123.0</b> (CTAF)
----------------------------	---------------------------------------	-------------------------------



SC-3, 28 NOV 2024 to 26 DEC 2024

SC-3, 28 NOV 2024 to 26 DEC 2024

ELEV	909	TDZE	903
------	-----	------	-----



CATEGORY	A	B	C	D
LP MDA	1340-1	437 (500-1)		NA
LNAV MDA	1360-1	457 (500-1)		NA
CIRCLING	1620-1 711 (800-1)	1960-1 ½ 1051 (1100-1½)		NA