

WAAS CH <b>99347</b> <b>W21A</b>	APP CRS <b>210°</b>	Rwy Idg <b>4000</b> TDZE <b>21</b> Apt Elev <b>21</b>
--	------------------------	---

# RNAV (GPS) RWY 21

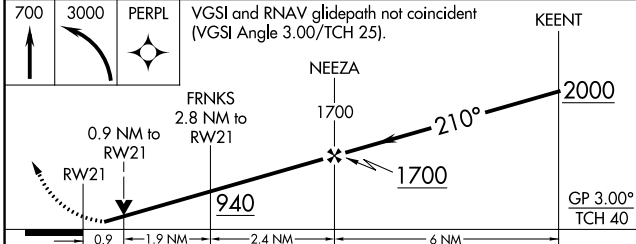
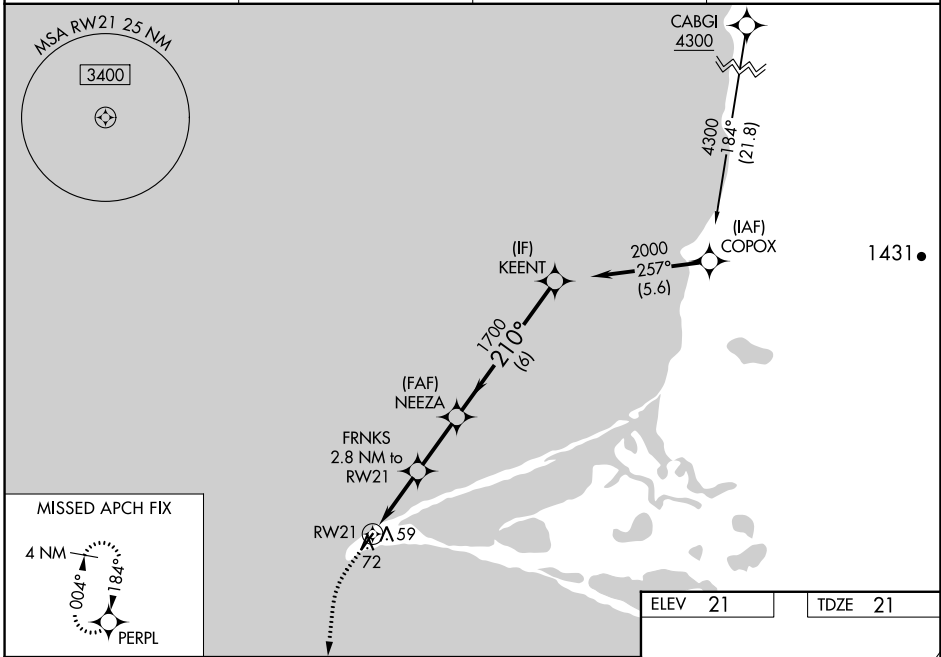
POINT HOPE (PHO) (PAPO)

RNP APCH - GPS.

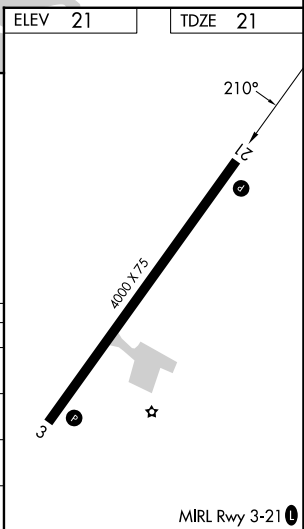
**⚠** For uncompensated Baro-VNAV systems, LNAV/VNAV NA below -20°C or above 54°C. Rwy 21 helicopter visibility reduction below 3/4 SM NA. Baro-VNAV and VDP NA when using LUR/PALU altimeter setting. When local altimeter setting not received, use LUR/PALU altimeter setting and increase LPV DA to 303 feet; increase LNAV/VNAV DA to 353 feet; increase all MDAs 100 feet and LNAV visibility Cat C/D 1/2 SM.

MISSED APPROACH: Climb to 700 then climbing left turn to 3000 direct PERPL and hold, continue climb-in-hold to 3000.

AWOS-3P <b>118.325</b>	ANCHORAGE CENTER <b>119.65 363.25</b>	KOTZEBUE RADIO <b>122.25</b>	CTAF <b>122.8</b> <b>0</b>
---------------------------	--	---------------------------------	-------------------------------



CATEGORY	A	B	C	D
LPV DA		221-1	200 (200-1)	
LNAV/VNAV DA		271-1	250 (300-1)	
LNAV MDA		320-1	299 (300-1)	
CIRCLING	380-1 359 (400-1)	480-1 459 (500-1)	480-1½ 459 (500-1½)	580-2 559 (600-2)



AK, 31 OCT 2024 to 26 DEC 2024

AK, 31 OCT 2024 to 26 DEC 2024