

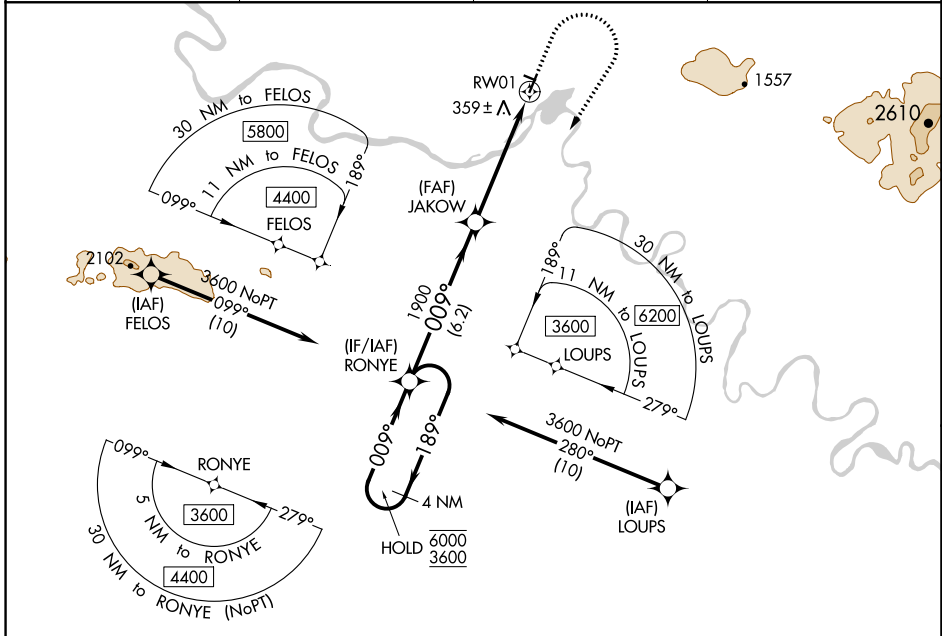
WAAS CH 40439 W01A	APP CRS 009°	Rwy Idg TDZE Apt Elev	4000 268 293
--	------------------------	-----------------------------	---

RNAV (GPS) RWY 1

AMBLER (AFM) (PAFM)

RNP APCH.	MISSED APPROACH: Climb to 1000 then climbing right turn to 3600 direct RONYE and hold, continue climb-in-hold to 3600. # Missed approach requires minimum climb of 210 feet per NM to 2300.
<p> Circling NA west of Rwy 1-19. For uncompensated Baro-VNAV systems, LNAV/VNAV NA below -20°C or above 42°C. -36°C </p>	

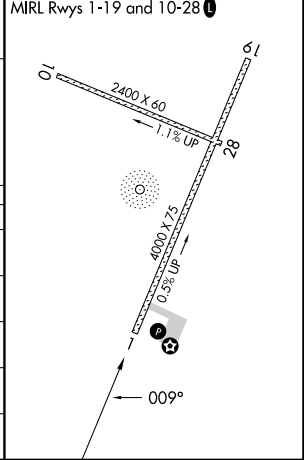
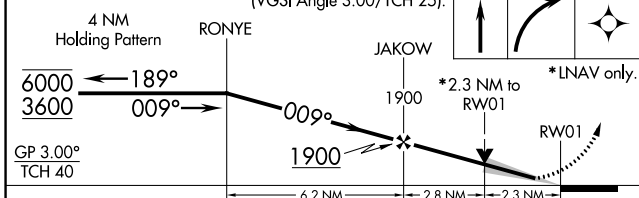
AWOS-3P 132.1	ANCHORAGE CENTER 119.2 263.0	KOTZEBUE RADIO 122.0	CTAF 122.7 0
-------------------------	--	--------------------------------	------------------------



AK, 31 OCT 2024 to 26 DEC 2024

AK, 31 OCT 2024 to 26 DEC 2024

VGSI and RNAV glidepath not coincident (VGSI Angle 3.00/TCH 25).	1000	3600	RONYE	ELEV 293	TDZE 268
--	------	------	-------	----------	----------



CATEGORY	A	B	C	D
LPV DA#		518-1	250 (300-1)	
LPV DA		686-1 $\frac{3}{8}$	418 (400-1 $\frac{3}{8}$)	
LNAV/VNAV DA		811-1 $\frac{7}{8}$	543 (600-1 $\frac{7}{8}$)	
LNAV MDA	1000-1 732 (800-1)	1000-1 $\frac{1}{4}$ 732 (800-1 $\frac{1}{4}$)	1000-1 $\frac{7}{8}$ 732 (800-1 $\frac{7}{8}$)	732 (800-1 $\frac{7}{8}$)
CIRCLING	1000-1 707 (800-1)	1000-1 $\frac{1}{4}$ 707 (800-1 $\frac{1}{4}$)	1000-2 707 (800-2)	1000-2 $\frac{1}{4}$ 707 (800-2 $\frac{1}{4}$)