

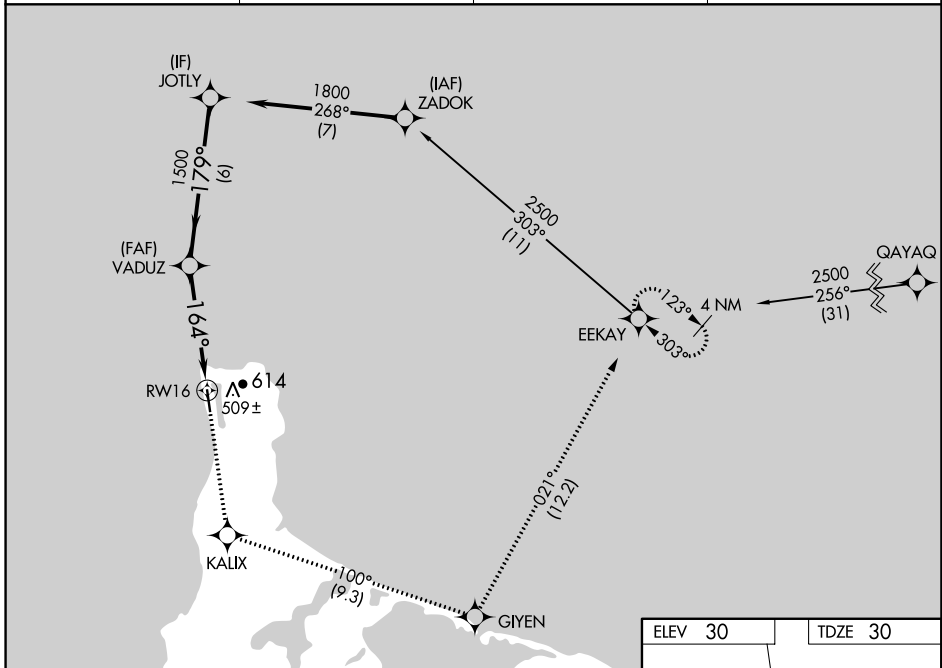
WAAS CH 86635 W16A	APP CRS 164°	Rwy ldg TDZE Apt Elev	4500 30 30
--	------------------------	-----------------------------	---------------------------------------

RNAV (GPS) RWY 16

GAMBELL (GAM) (PAGM)

RNP APCH - GPS.		MISSED APPROACH: Climb to 2500 direct KALIX then left turn on track 100° to GIYEN and on track 021° to EEKAY and hold.
	Circling NA east of Rwy 16-34. For uncompensated Baro-VNAV systems, LNAV/VNAV NA below -20°C or above 54°C.	

AWOS-3P 125.9	ANCHORAGE CENTER 132.2 281.4	NOME RADIO 122.0	CTAF 122.7
-------------------------	--	----------------------------	----------------------



AK, 31 OCT 2024 to 26 DEC 2024

AK, 31 OCT 2024 to 26 DEC 2024

JOTLY	2500	KALIX	GIYEN	EEKAY
1800	↑	↙ tr 100°	↘ tr 021°	
GP 3.00° TCH 37	1500	1.4 NM to RWY 16		
6 NM	3.1 NM	1.4 NM		
CATEGORY	A	B	C	D
LPV DA	230-1		200 (200-1)	
LNAV/VNAV DA	523-1 3/8		493 (500-1 3/8)	
LNAV MDA	520-1	490 (500-1)	520-1 3/8	490 (500-1 3/8)
CIRCLING	520-1	490 (500-1)	520-1 1/2 490 (500-1 1/2)	660-2 630 (700-2)

