

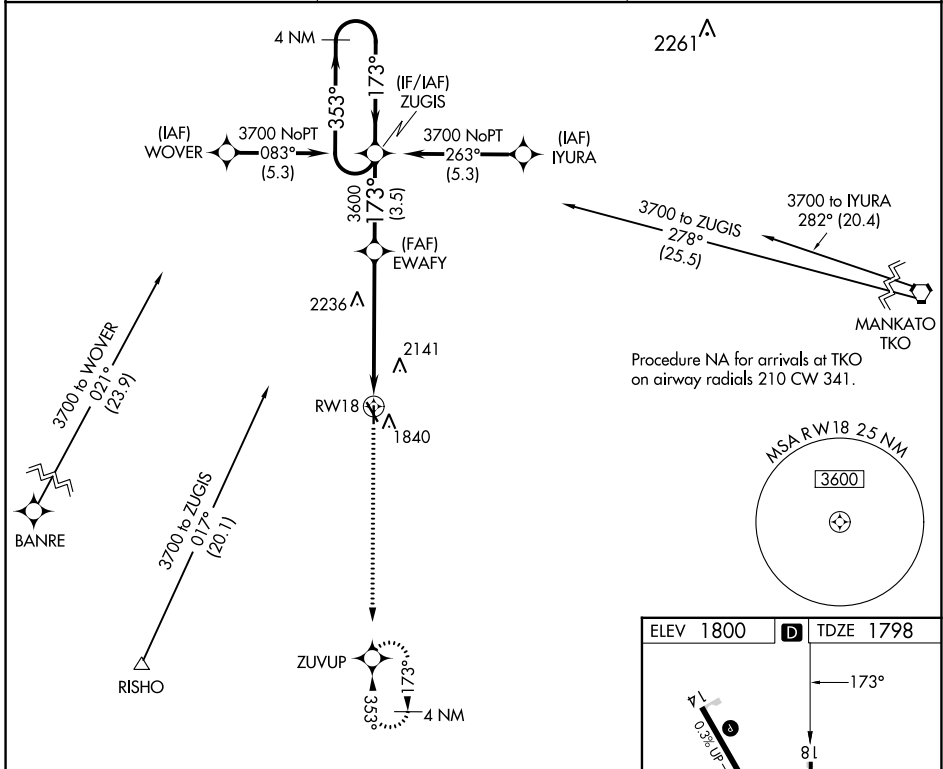
APP CRS	Rwy Idg	<b>3601</b>
<b>173°</b>	TDZE	<b>1798</b>
	Apt Elev	<b>1800</b>

# RNAV (GPS) RWY 18

SMITH CENTER MUNI (K82)

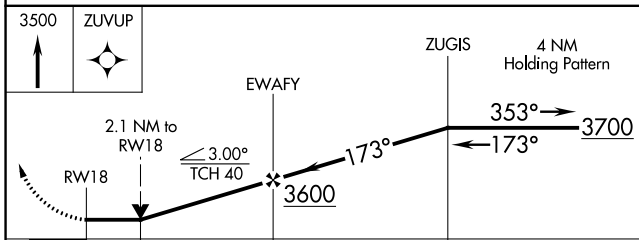
RNP APCH:	<p>Circling to Rwy 36 NA at night. Rwy 18 helicopter visibility reduction below 3/4 SM NA. VDP NA when using Concordia altimeter setting. When local altimeter setting not received, use Concordia altimeter setting: increase all MDAs 180 feet and LNAV Cats A/B and Circling Cat A visibility 1/4 SM, and Circling Cat B visibility 1/2 SM.</p>	<p>MISSED APPROACH: Climb to 3500 direct ZUVUP and hold.</p>
-----------	--	--

AWOS-3PT <b>118.45</b>	MINNEAPOLIS CENTER <b>119.4 278.8</b>	UNICOM <b>122.8 (CTAF) 1</b>
---------------------------	--	---------------------------------

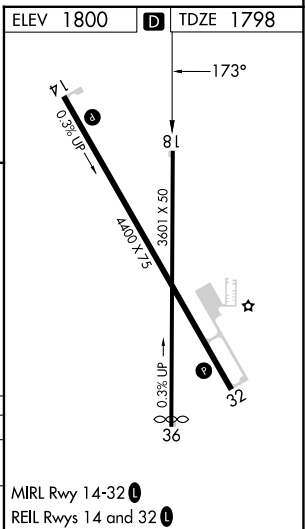


NC-2, 28 NOV 2024 to 26 DEC 2024

NC-2, 28 NOV 2024 to 26 DEC 2024



CATEGORY	A	B	C	D
LNAV MDA	2500-1	702 (700-1)	NA	
<b>C</b> CIRCLING	2500-1 700 (700-1)	2580-1 780 (800-1)	NA	



MIRL Rwy 14-32 1  
REIL Rws 14 and 32 1