

NDB HQT <b>417</b>	APP CRS <b>230°</b>	Rwy Idg <b>5005</b> TDZE <b>202</b> Apt Elev <b>202</b>
-----------------------	------------------------	---------------------------------------------------------------

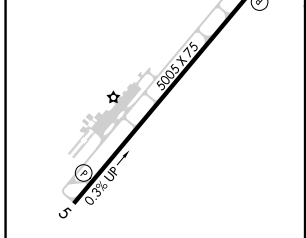
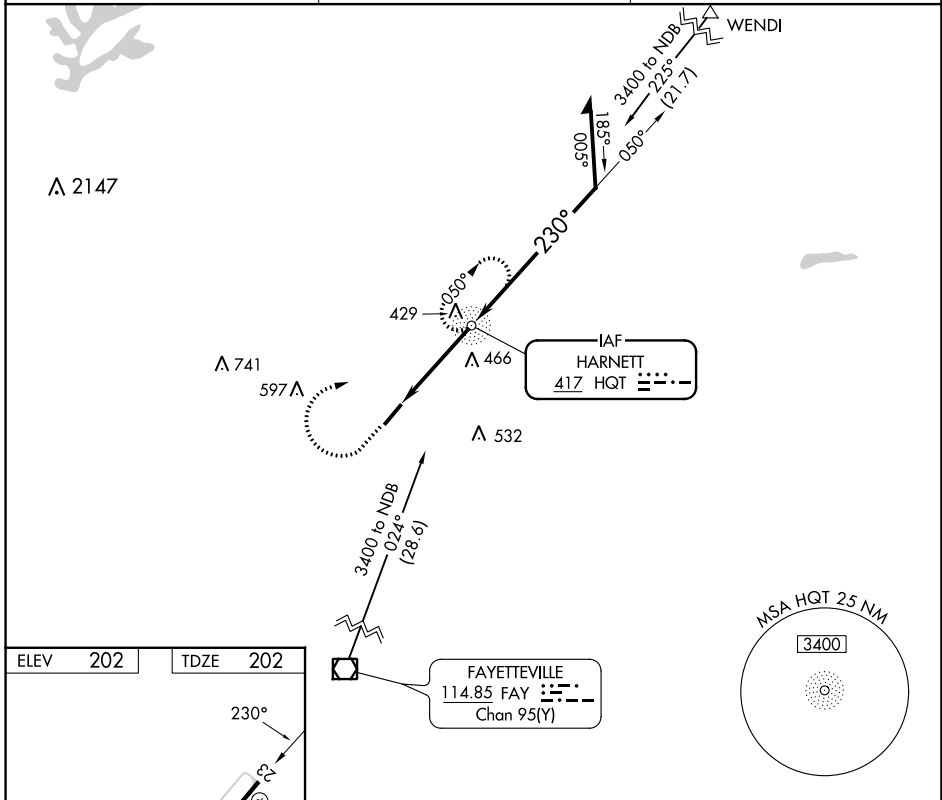
# NDB RWY 23

HARNETT RGNL JETPORT (HRJ)

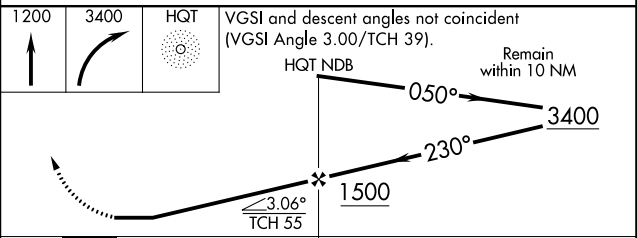
⚠ When local altimeter setting not received, use Smithfield altimeter setting and increase all MDA 60 feet, and S-23 and Circling Cat C visibility 1/8 mile. Helicopter visibility reduction below 3/4 SM NA.

✈ MISSED APPROACH: Climb to 1200 then climbing right turn to 3400 direct HQT NDB and hold.

AWOS-3 <b>119.025</b>	FAYETTEVILLE APP CON <b>125.175 285.575</b>	UNICOM <b>122.7(CTAF) 0</b>
--------------------------	------------------------------------------------	--------------------------------



ELEV	202	TDZE	202		
REIL Rwy 5 and 23 <span style="border: 1px solid black; padding: 2px;">1</span> MIRL Rwy 5-23 <span style="border: 1px solid black; padding: 2px;">1</span>					
FAF to MAP 3.8 NM					
Knots	60	90	120	150	180
Min:Sec	3:48	2:32	1:54	1:31	1:16



CATEGORY	A	B	C	D
S-23	780-1	578 (600-1)	780-1 1/2 578 (600-1 1/2)	NA
CIRCLING	780-1	578 (600-1)	780-1 1/2 578 (600-1 1/2)	NA