

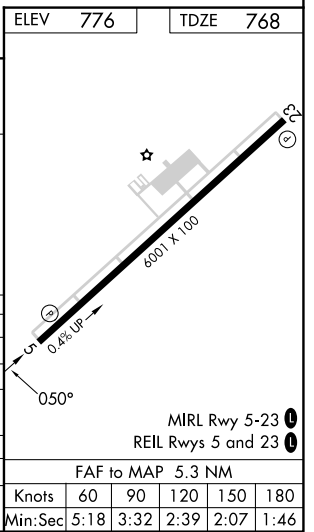
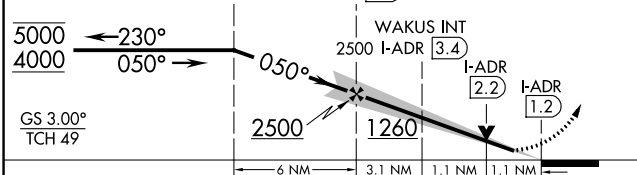
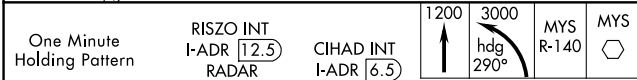
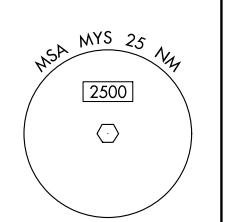
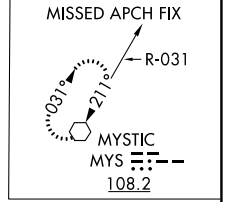
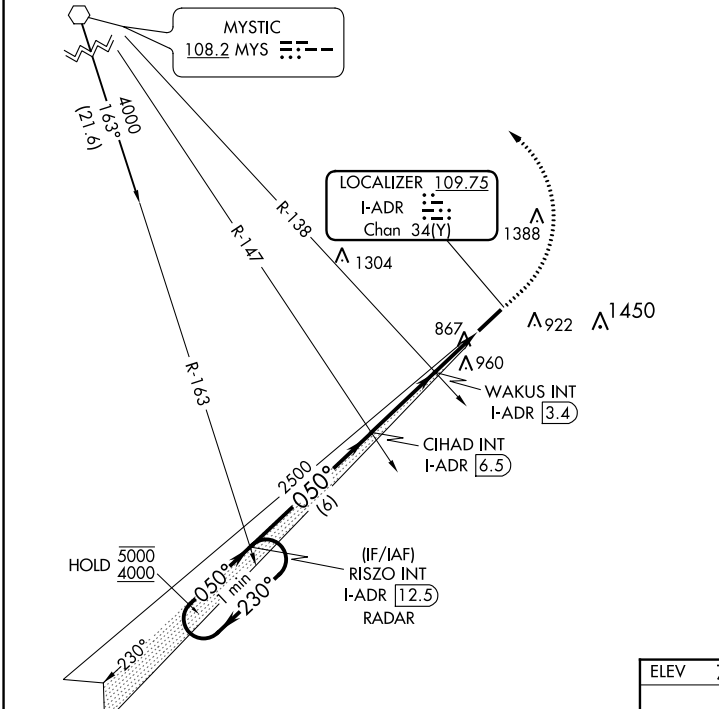
LOC/DME I-ADR <b>109.75</b> Chan <b>34 (Y)</b>	APP CRS <b>050°</b>	Rwy Idg TDZE Apt Elev <b>6001</b> <b>768</b> <b>776</b>
------------------------------------------------------	------------------------	------------------------------------------------------------------------

# ILS or LOC RWY 5

ADDINGTON FLD (EKK)

**MISSED APPROACH:** Climb to 1200 then climbing left turn to 3000 on heading 290° and MYS R-140 to MYS VOR and hold.

AWOS-3 <b>121.025</b>	LOUISVILLE APP CON <b>132.075 327.0</b>	CLNC DEL <b>119.45</b>	UNICOM <b>122.8 (CTAF) 0</b>
--------------------------	--------------------------------------------	---------------------------	---------------------------------



CATEGORY	A	B	C	D
S-ILS 5	968-3/4		200 (200-3/4)	
S-LOC 5	1260-1	492 (500-1)	1260-1 3/8	492 (500-1 3/8)
<b>CIRCLING</b>	1260-1	484 (500-1)	1420-1 3/4 644 (700-1 3/4)	1760-3 984 (1000-3)
WAKUS FIX MINIMUMS (DUAL VOR RECEIVERS OR DME REQUIRED)				
S-LOC 5	1140-1 372 (400-1)			
<b>CIRCLING</b>	1240-1 464 (500-1)	1260-1 484 (500-1)	1420-1 3/4 644 (700-1 3/4)	1760-3 984 (1000-3)

FAF to MAP 5.3 NM					
Knots	60	90	120	150	180
Min:Sec	5:18	3:32	2:39	2:07	1:46

SE-1, 28 NOV 2024 to 26 DEC 2024

SE-1, 28 NOV 2024 to 26 DEC 2024