

APP CRS <b>346°</b>	Rwy Idg <b>3399</b>
	TDZE <b>702</b>
	Apt Elev <b>702</b>

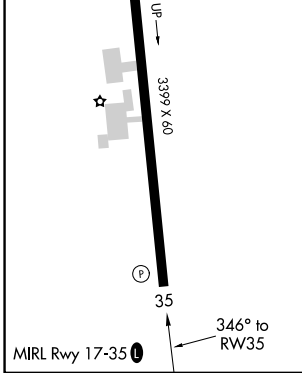
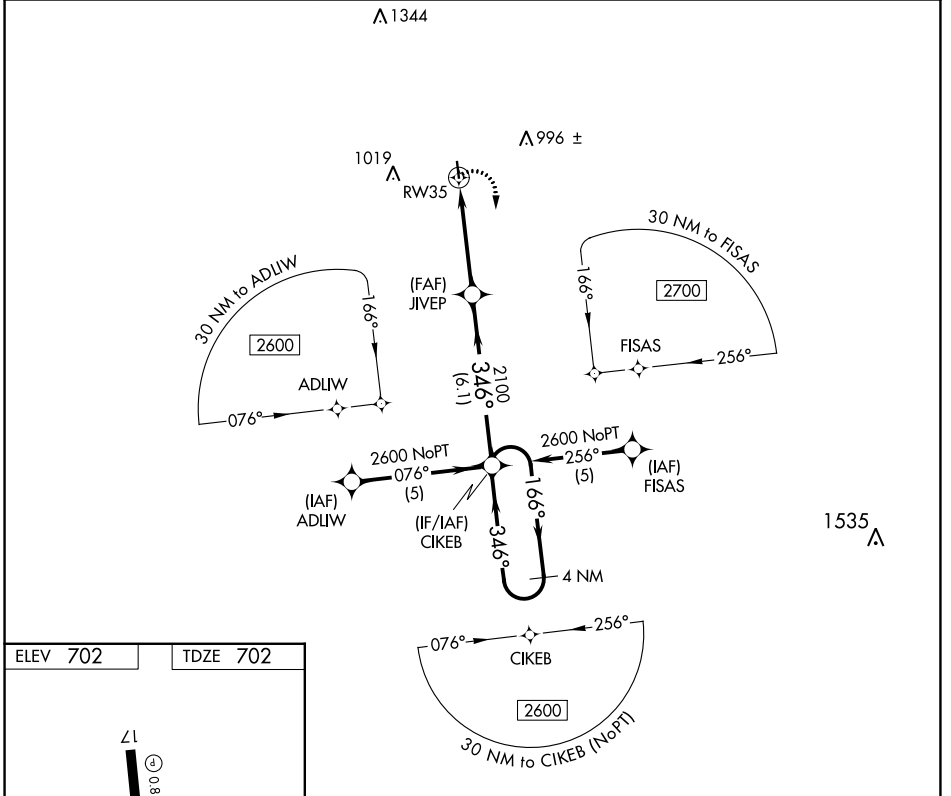
# RNAV (GPS) RWY 35

DEVINE MUNI (23R)

**▽** DME/DME RNP-0.3 NA. Use Castroville Muni altimeter setting; when not received, use Hondo Muni altimeter setting and increase all MDA 40 feet.  
**▲ NA** Night landing: Rwy 35 NA. Helicopter visibility below 1 SM NA.

MISSED APPROACH: Climbing right turn to 2600 direct CIKEB and hold.

CVB AWOS-3 <b>119.25</b>	HOUSTON CENTER <b>134.95 269.4</b>	CTAF <b>122.9</b>
-----------------------------	---------------------------------------	----------------------



	2600	CIKEB	Visual Segment - Obstacles.		CIKEB	4 NM Holding Pattern
						2600
	RW35	JIVEP	2100			
		4.2 NM	6.1 NM			
CATEGORY	A	B	C	D		
LNAV MDA	1140-1	438 (500-1)		NA		
CIRCLING	1380-1	678 (700-1)		NA		

SC-3, 28 NOV 2024 to 26 DEC 2024

SC-3, 28 NOV 2024 to 26 DEC 2024