


LOM JV 331	APP CRS 182°	Rwy Idg TDZE Apt Elev	7000 476 476
----------------------	------------------------	-----------------------------	---

NDB RWY 18

CLARK RGNL (JVY)

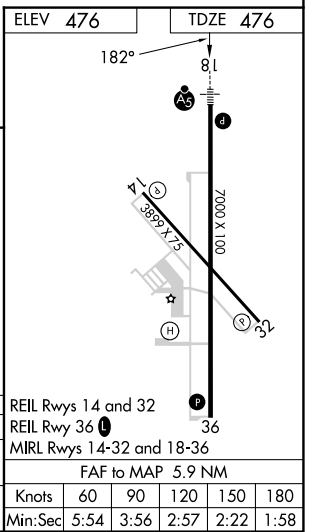
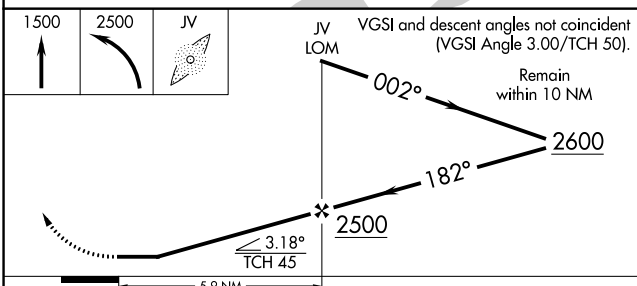
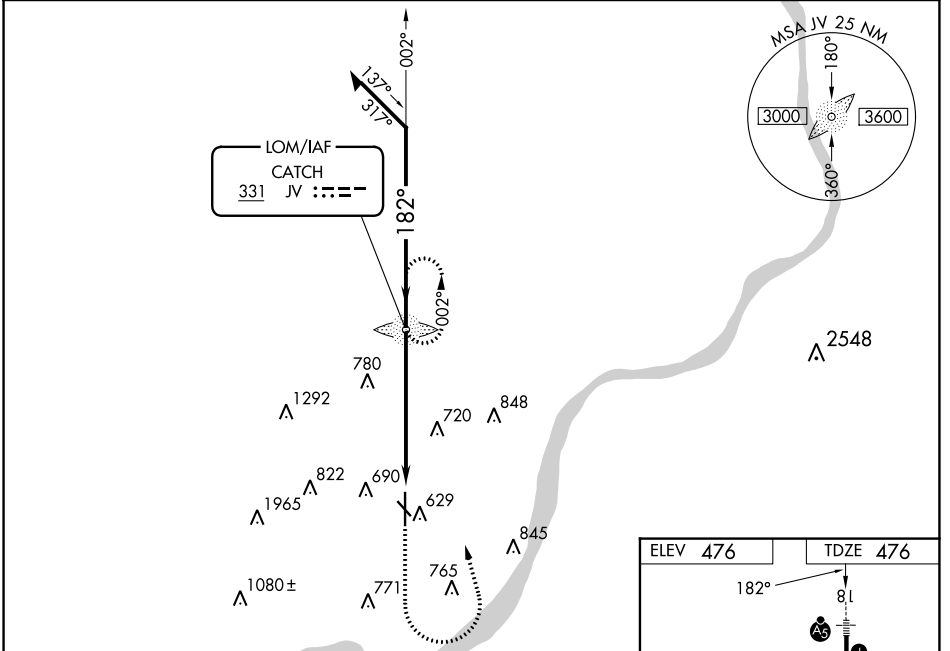
RADAR required for procedure entry.

NA Circling NA for Cat D southwest of Rws 14 and 36. Circling Rwy 14, 32 NA at night. For inop ALS, increase S-18 Cats A and B visibility to 1 SM and Cats C and D to 1 3/4 SM. When local altimeter setting not received, use Louisville Muhammad Ali Intl altimeter setting and increase all MDAs 40 feet and Circling visibility Cat C 1/8 SM. For inop ALS when using Louisville Muhammad Ali Intl altimeter setting, increase S-18 Cats A and B visibility to 1 SM.

MALSRL 

MISSED APPROACH: Climb to 1500 then climbing left turn to 2500 direct CATCH LOM and hold.

AWOS-3 118.575	LOUISVILLE APP CON 132.075 327.0	CINC DEL 118.05	UNICOM 122.7 (CTAF) 0
--------------------------	--	---------------------------	---------------------------------



CATEGORY	A	B	C	D
S-18	1080-3/4 604 (700-3/4)		1080-1 3/8 604 (700-1 1/8)	
CIRCLING	1080-1 604 (700-1)		1080-1 3/4 604 (700-1 3/4)	1100-2 624 (700-2)

EC-2, 28 NOV 2024 to 26 DEC 2024

EC-2, 28 NOV 2024 to 26 DEC 2024