

APP CRS	Rwy Idg	7000
342°	TDZE	462
	Apt Elev	478

RNAV (GPS) RWY 36

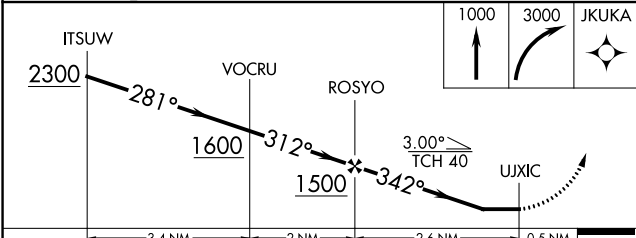
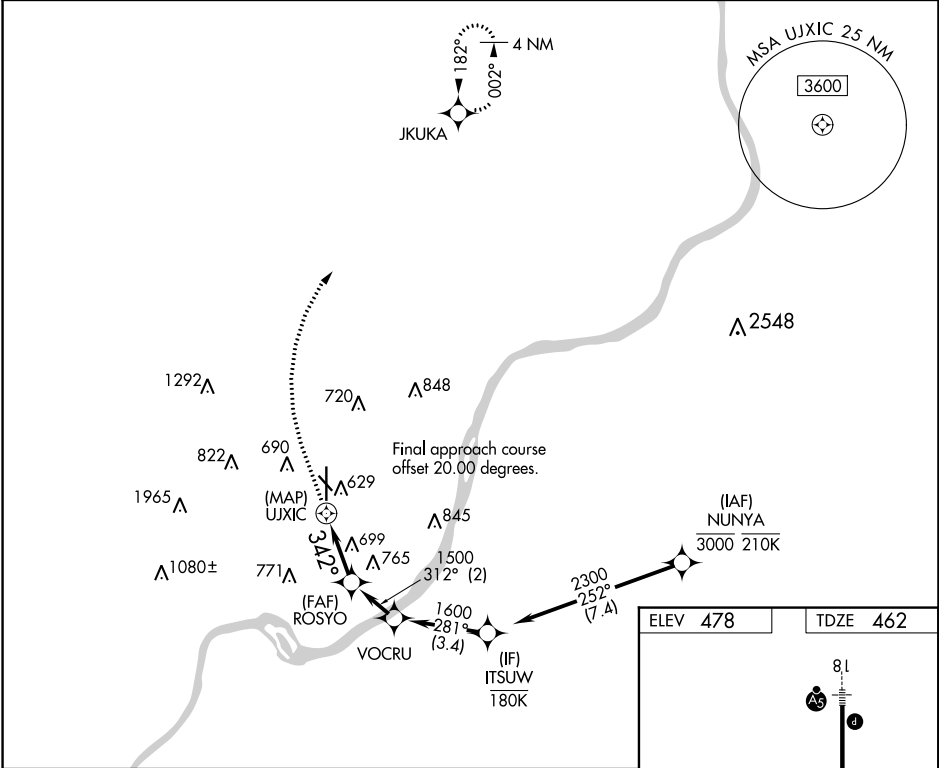
CLARK RGNL (JVY)

RNP APCH - GPS.

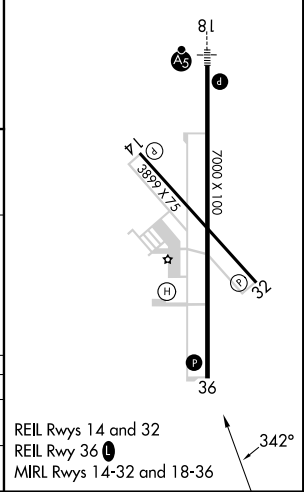
▼ Rwy 36 helicopter visibility reduction below 1 SM NA. Circling NA for Cat D southwest of Rwys 14 and 36. When local altimeter setting not received, use Louisville Muhammad Ali Intl altimeter setting and increase all MDAs 40 feet and visibility LNAV Cat C/D 1/8 SM, and Circling Cat C 1/4 SM. Straight-In Rwy 36 NA at night, Circling Rwy 14, 32, 36 NA at night.

MISSED APPROACH:
Climb to 1000 then climbing right turn to 3000 direct JKUKA and hold.

AWOS-3 118.575	LOUISVILLE APP CON 132.075 327.0	CLNC DEL 118.05	UNICOM 122.7 (CTAF) 0
--------------------------	--	---------------------------	---------------------------------



ELEV 478	TDZE 462
----------	----------



CATEGORY	A	B	C	D
LNAV MDA	1000-1	538 (600-1)	1000-1½	538 (600-1½)
CIRCLING	1000-1 522 (600-1)	1040-1 562 (600-1)	1060-1½ 582 (600-1½)	1100-2 622 (700-2)

REIL Rwys 14 and 32
REIL Rwy 36 0
MIRL Rwys 14-32 and 18-36

EC-2, 28 NOV 2024 to 26 DEC 2024

EC-2, 28 NOV 2024 to 26 DEC 2024