

WAAS CH <b>69245</b> <b>W19A</b>	APP CRS <b>190°</b>	Rwy Idg <b>5406</b> TDZE <b>909</b> Apt Elev <b>909</b>
--	------------------------	---

# RNAV (GPS) RWY 19

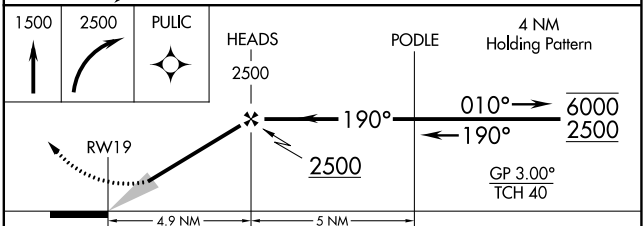
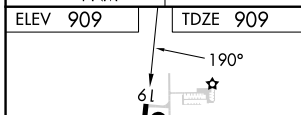
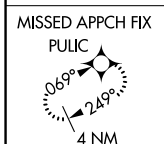
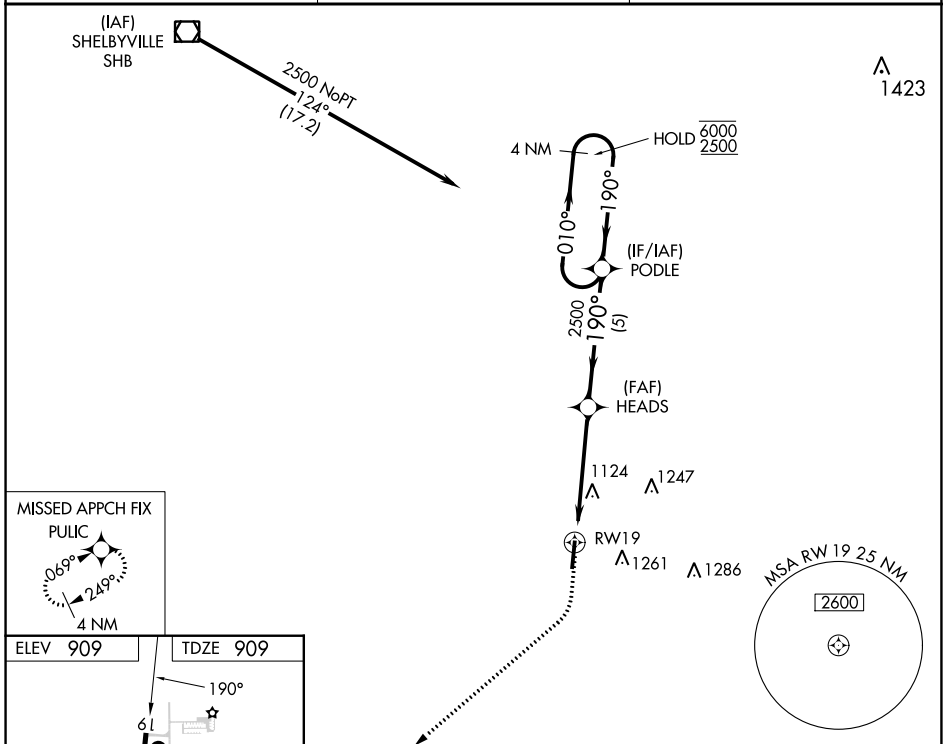
GREENSBURG MUNI (I34)

RNP APCH - GPS.

**▼** Baro-VNAV NA. Use Columbus Muni altimeter setting, when not received, use Indianapolis  
**▲ NA** Int'l altimeter setting: increase LPV DA to 1327 feet and all visibilities  $\frac{1}{8}$  SM; increase LNAV/VNAV DA to 1419 feet; increase all MDAs 40 feet and Circling visibility Cat C  $\frac{1}{4}$  SM.

**MISSED APPROACH:**  
 Climb to 1500 then climbing right turn to 2500 direct PULIC and hold.

BAK AWOS-3 <b>119.75</b>	INDIANAPOLIS APP CON <b>127.15</b>	CTAF <b>122.9</b>
-----------------------------	---------------------------------------	----------------------



CATEGORY	A	B	C	D
LPV DA	1288-1	379 (400-1)		NA
LNAV/VNAV DA	1380-1 $\frac{3}{8}$	471 (500-1 $\frac{3}{8}$ )		NA
LNAV MDA	1500-1	591 (600-1)	1500-1 $\frac{3}{4}$ 591 (600-1 $\frac{3}{4}$ )	NA
CIRCLING	1540-1 631 (700-1)	1640-1 731 (800-1)	1640-2 731 (800-2)	NA

MIRL Rwy 1-19  
 REIL Rws 1 and 19

EC-2, 28 NOV 2024 to 26 DEC 2024

EC-2, 28 NOV 2024 to 26 DEC 2024