

WAAS CH <b>58308</b> <b>W18A</b>	APP CRS <b>176°</b>	Rwy ldg <b>5200</b> TDZE <b>826</b> Apt Elev <b>831</b>
--	------------------------	---

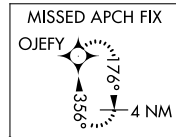
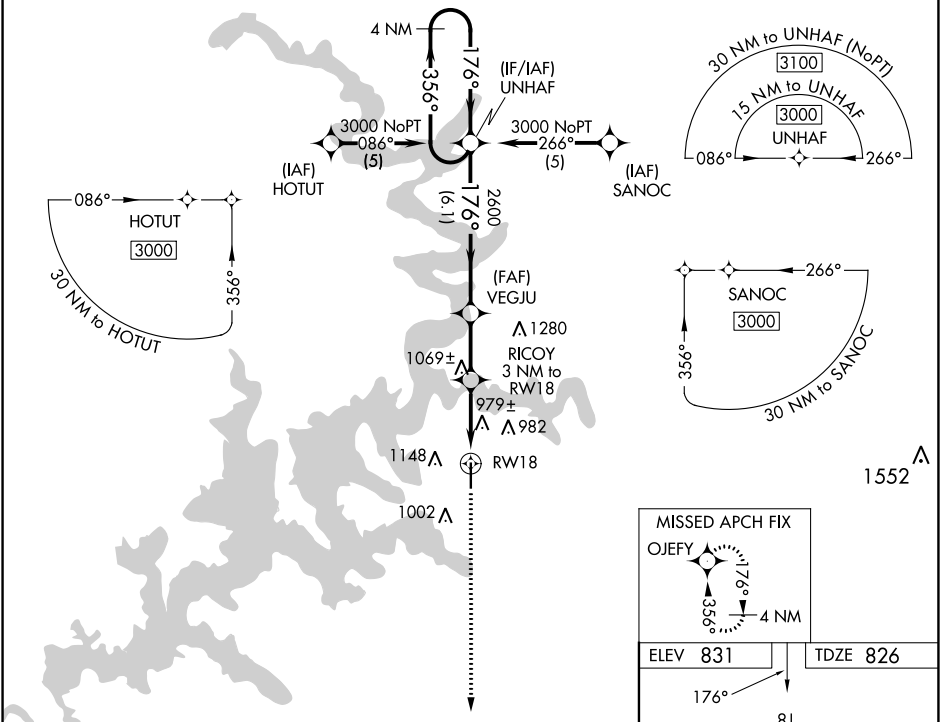
# RNAV (GPS) RWY 18

GROVE RGNL (GMJ)

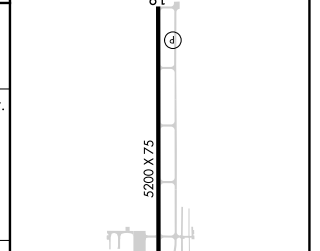
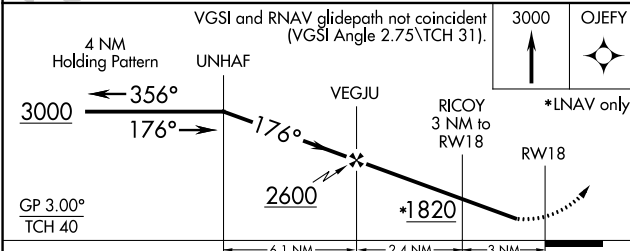
For uncompensated Baro-VNAV systems, LNAV/VNAV NA below -16°C (4°F) or above 54°C (130°F). DME/DME RNP-0.3 NA. Visibility reduction by helicopters NA.

MISSED APPROACH: Climb to 3000 direct OJEFY and hold.

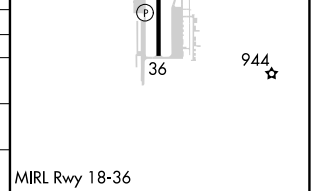
AWOS-3PT <b>119.025</b>	KANSAS CITY CENTER <b>128.6 282.325</b>	UNICOM <b>122.8 (CTAF)</b>
----------------------------	--	-------------------------------



ELEV 831	TDZE 826
----------	----------



CATEGORY	A	B	C	D
LPV DA	1153-1¼ 327 (400-1¼)			NA
LNAV/VNAV DA	1346-2 520 (600-2)			NA
LNAV MDA	1240-1 414 (500-1)		1240-1¼ 414 (500-1¼)	NA
CIRCLING	1500-1 669 (700-1)		1500-1¾ 669 (700-1¾)	NA



SC-1, 28 NOV 2024 to 26 DEC 2024

SC-1, 28 NOV 2024 to 26 DEC 2024