

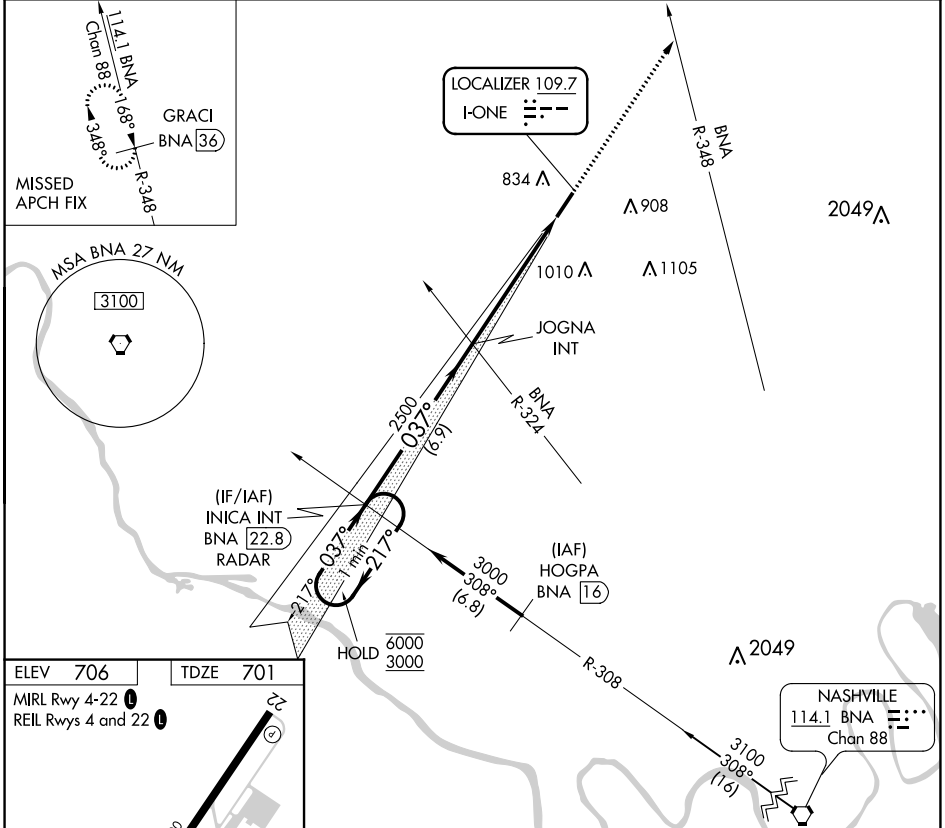
# LOC RWY 4

SPRINGFIELD ROBERTSON COUNTY (M91)

LOC I-ONE <b>109.7</b>	APP CRS <b>037°</b>	Rwy Idg <b>5505</b> TDZE <b>701</b> Apt Elev <b>706</b>
---------------------------	------------------------	---

**NA** Rwy 4 helicopter visibility reduction below 3/4 SM NA. MISSED APPROACH: Climb to 3100 on heading 037° and BNA VORTAC R-348, to GRACI/BNA 36 DME and hold.

AWOS-3 <b>120.675</b>	NASHVILLE APP CON <b>119.35 372.0</b>	UNICOM <b>123.0 (CTAF) 0</b>
--------------------------	--	---------------------------------



ELEV <b>706</b>	TDZE <b>701</b>				
MIRL Rwy 4-22 <b>0</b>	REIL Rws 4 and 22 <b>0</b>				
5505 x 100					
FAF to MAP 5.5 NM					
Knots	60	90	120	150	180
Min:Sec	5:30	3:40	2:45	2:12	1:50

INICA INT BNA <b>22.8</b> RADAR 6000 ← 217° 3000 ← 037°	3100 ↑ JOGNA INT 3.00° TCH 40	hdg 037°	BNA R-348	GRACI BNA <b>36</b>
		6.9 NM      5.5 NM		
CATEGORY S-4	A 1180-1 479 (500-1)	B 1180-1 474 (500-1)	C 1180-1 3/8 479 (500-1 3/8)	D 1360-1 3/4 479 (500-1 3/8) 1540-2 3/4 834 (900-2 3/4)
<input checked="" type="checkbox"/> CIRCLING	1180-1 474 (500-1)      1360-1 3/4 654 (700-1 3/4)      1540-2 3/4 834 (900-2 3/4)			

# LOC RWY 4

SE-1, 28 NOV 2024 to 26 DEC 2024

SE-1, 28 NOV 2024 to 26 DEC 2024