

APP CRS	Rwy Idg	<b>3252</b>
<b>146°</b>	TDZE	<b>391</b>
	Apt Elev	<b>391</b>

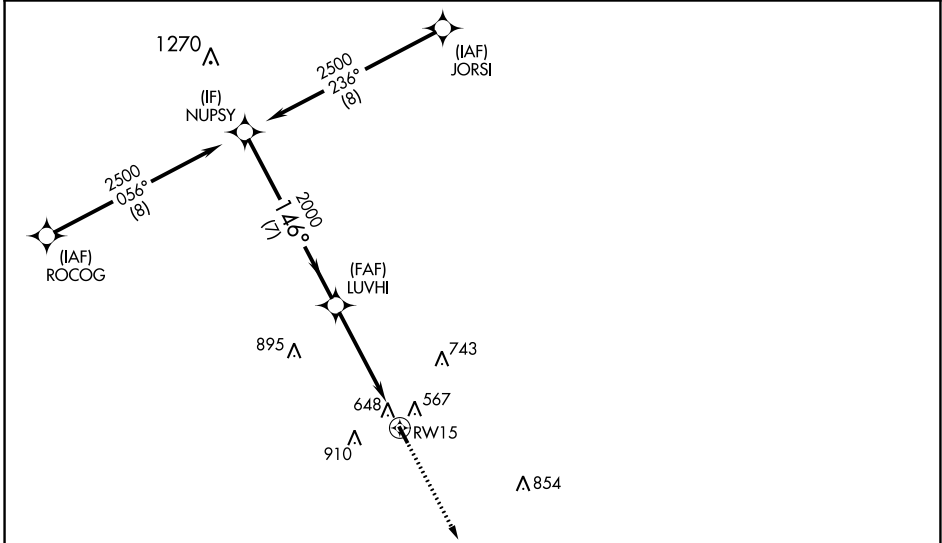
# RNAV (GPS) RWY 15

CALDWELL MUNI (RWV)

**⚠** When local altimeter setting not received, use College Station altimeter setting and increase all MDA 60 feet. Circling NA east of Rwy 15-33.  
**⚠** DME/DME RNP-0.3 NA. Procedure NA at night. Helicopter visibility reduction below 1 SM NA.

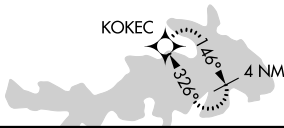
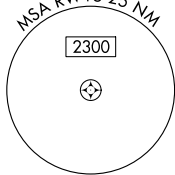
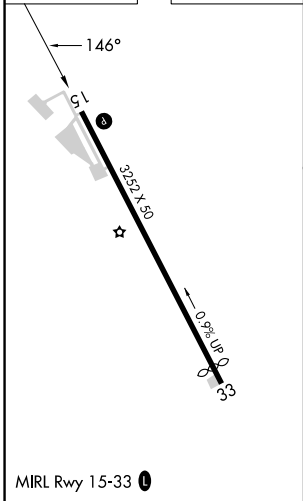
MISSED APPROACH: Climb to 2000 direct KOKEC and hold.

AWOS-3PT <b>118.35</b>	HOUSTON APP CON <b>134.3 360.85</b>	CTAF <b>122.9</b> <b>①</b>
---------------------------	--	-------------------------------



## RADAR REQUIRED

ELEV 391	TDZE 391
----------	----------



NUPSY 2500 146° LUVHI 2000 3.00° TCH 36 RWY 15	2000	KOKEC		
	↑	✧		
7 NM		4.9 NM		
CATEGORY	A	B	C	D
LNAV MDA	960-1	569 (600-1)	NA	
CIRCLING	1000-1 609 (700-1)	1220-1¼ 829 (900-1¼)	NA	