

CALDWELL, TEXAS

AL-6743 (FAA)

23278

| | | | |
|--|------------------------|---|--------------------------|
| VORTAC CLL 113.3 Chan 80 | APP CRS 243° | Rwy Idg TDZE Apt Elev 391 | N/A N/A 391 |
|--|------------------------|---|--------------------------|

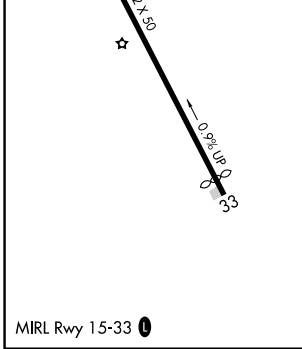
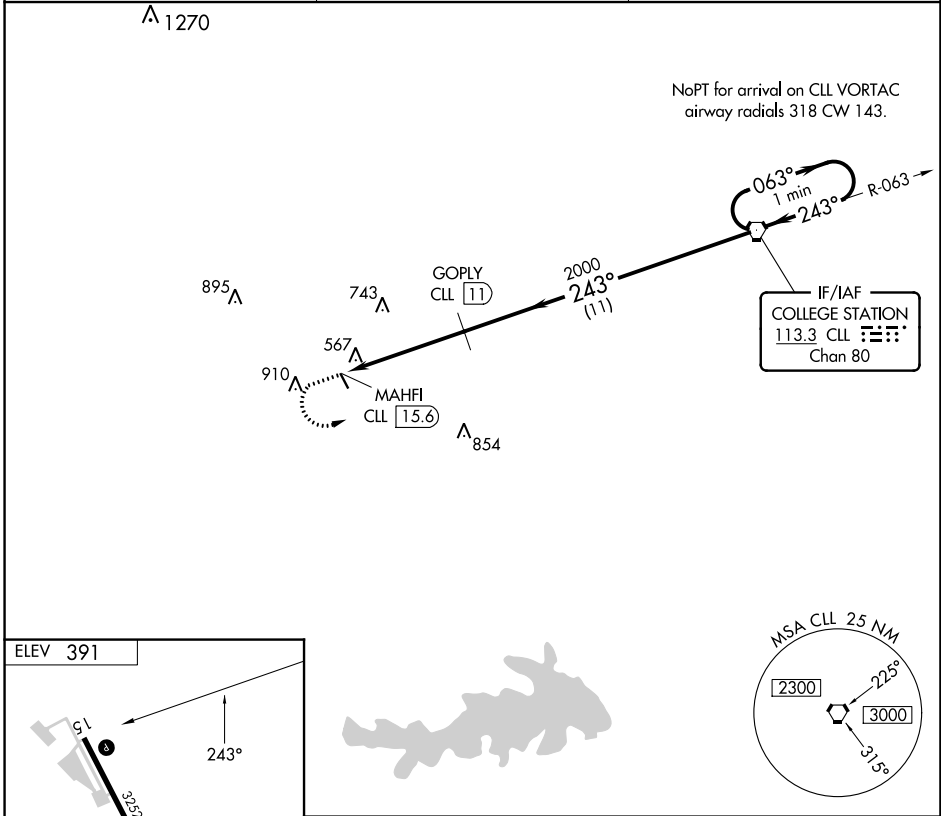
VOR/DME-A

CALDWELL MUNI (RWV)

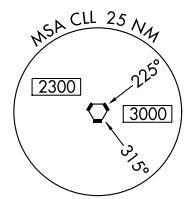
⚠ When local altimeter setting not received, use College Station altimeter setting and increase MDA 60 feet. Circling NA east of Rwy 15-33. Procedure NA at night.

MISSED APPROACH: Climb to 2000 then climbing left turn to 2100 direct CLL VORTAC and hold.

| | | |
|---------------------------|--|----------------------|
| AWOS-3PT 118.35 | HOUSTON APP CON 134.3 360.85 | CTAF 122.9 |
|---------------------------|--|----------------------|



| | | | | |
|----------------|-----------------------|-------------------------|-------------|----------------------------|
| 2000 | 2100 | CLL | CLL VORTAC | One Minute Holding Pattern |
| ↑ | ↶ | ⬡ | ⬡ | ⬡ |
| MAHFI CLL 15.6 | | GOPLY CLL 11 | 2100 | |
| 4.6 NM | | 11 NM | 063° → 2100 | |
| ← 243° | | ← 243° | | |
| CATEGORY | A | B | C | D |
| CIRCLING | 1000-1 609 (700-1) | 1220-1¼ 829 (900-1¼) | NA | |



SC-5, 28 NOV 2024 to 26 DEC 2024

SC-5, 28 NOV 2024 to 26 DEC 2024

CALDWELL, TEXAS
Amdt 3A 30DEC21

30°31'N-96°42'W

CALDWELL MUNI (RWV)
VOR/DME-A