

| | | |
|-------------|----------|-------------|
| APP CRS | Rwy Idg | 3201 |
| 052° | TDZE | 84 |
| | Apt Elev | 85 |

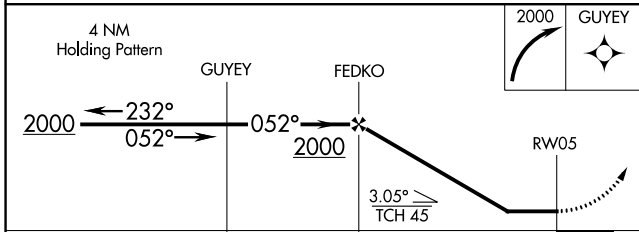
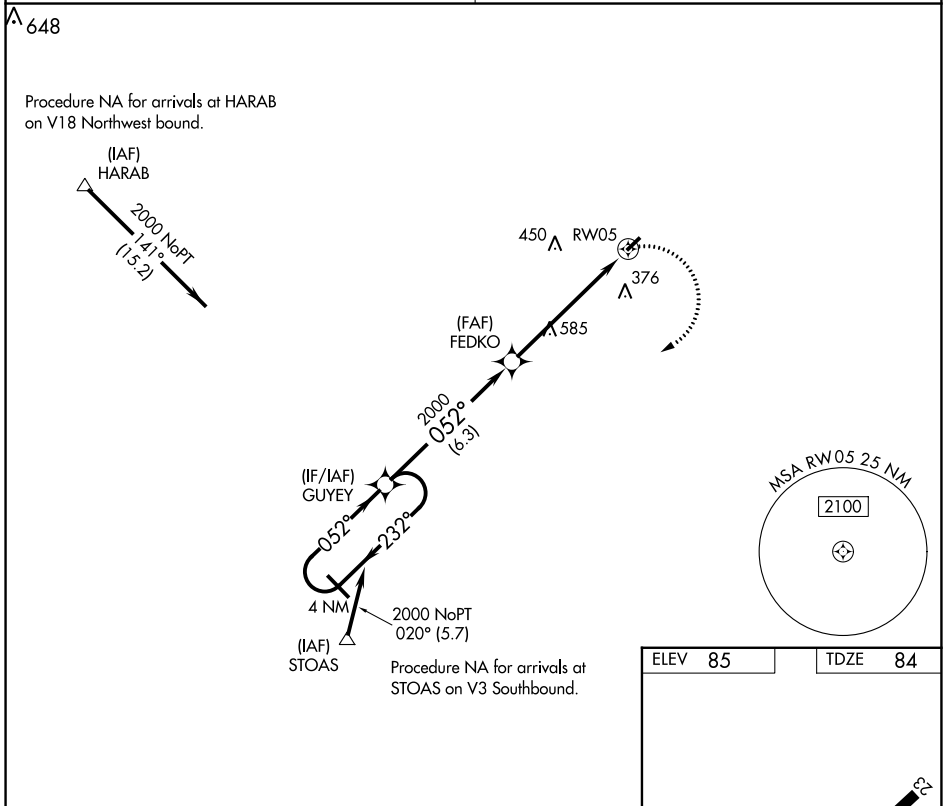
RNAV (GPS) RWY 5

ST GEORGE (6J2)

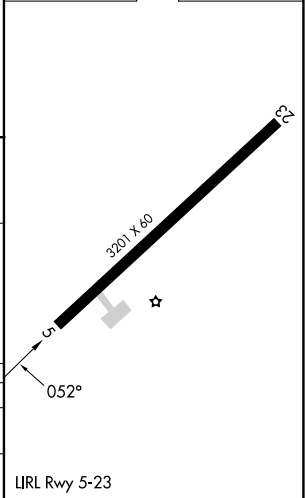
▼ DME/DME RNP-0.3 NA. Helicopter visibility reduction below 1 SM NA. Use Summerville altimeter setting; when not received, use Charleston altimeter setting and increase all MDAs 40 feet, increase LNAV and Circling Cat C visibility ¼ mile, increase LNAV and Circling Cat D visibility ½ mile. Procedure NA at night.

▲ NA MISSED APPROACH: Climbing right turn to 2000 direct GUYEY and hold.

| | |
|--|-------------------------------|
| CHARLESTON APP CON 120.7 306.925 | UNICOM 122.8 (CTAF) |
|--|-------------------------------|



| | |
|---------|---------|
| ELEV 85 | TDZE 84 |
|---------|---------|



| CATEGORY | A | B | C | D |
|----------|---------------------|---------------------|---------------------|---------------------|
| LNAV MDA | 940-1¼ 856 (900-1¼) | 940-2½ 856 (900-2½) | 940-2¾ 856 (900-2¾) | 940-2¾ 856 (900-2¾) |
| CIRCLING | 940-1¼ 855 (900-1¼) | 940-2½ 855 (900-2½) | 940-2¾ 855 (900-2¾) | 940-2¾ 855 (900-2¾) |