

APP CRS	Rwy Idg	<b>3434</b>
<b>067°</b>	TDZE	<b>9</b>
	Apt Elev	<b>9</b>

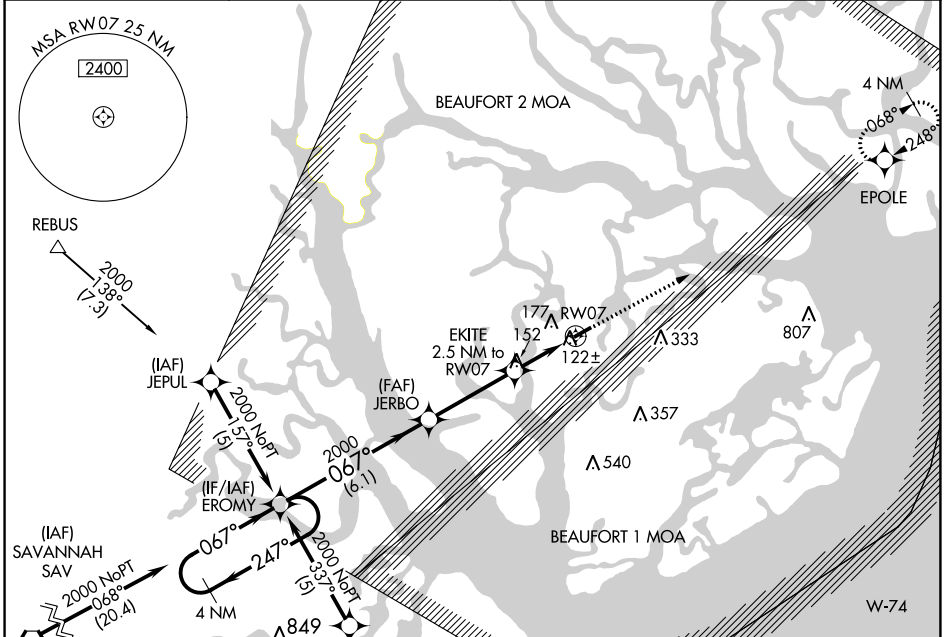
# RNAV (GPS) RWY 7

BEAUFORT EXEC (ARW)

**⚠** DME/DME RNP-0.3 NA. Helicopter visibility reduction below 3/4 SM NA. When local altimeter setting not received, use Beaufort MCAS (Merritt Flt) altimeter setting and increase all MDA 20 feet.

**⚠** MISSED APPROACH: Climb to 2000 direct EPOLE and hold.

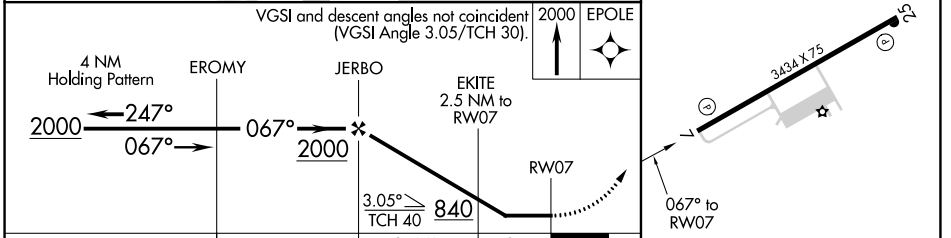
AWOS-3 <b>119.675</b>	BEAUFORT APP CON* <b>125.125 292.125</b>	CLNC DEL <b>121.725</b>	UNICOM <b>122.7 (CTAF) 0</b>
--------------------------	---	----------------------------	---------------------------------



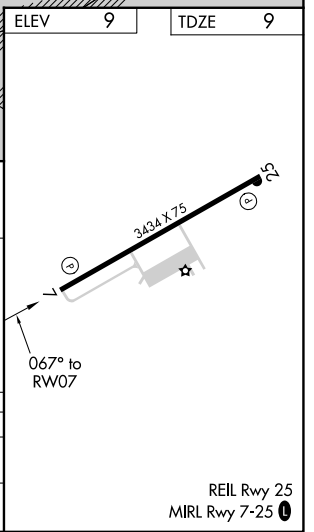
ELEV	9	TDZE	9
------	---	------	---

Procedure NA for arrivals at SAV VORTAC on V437 southwest bound.

RADAR required for arrivals at LEFKO.



CATEGORY	A	B	C	D
LNVA MDA	380-1	371 (400-1)		NA
CIRCLING	480-1	471 (500-1)	640-1 3/4 631 (700-1 3/4)	NA



SE-2, 28 NOV 2024 to 26 DEC 2024

SE-2, 28 NOV 2024 to 26 DEC 2024

REIL Rwy 25  
MIRL Rwy 7-25 0