

APP CRS 133°	Rwy Idg 3381
	TDZE 1132
	Apt Elev 1132

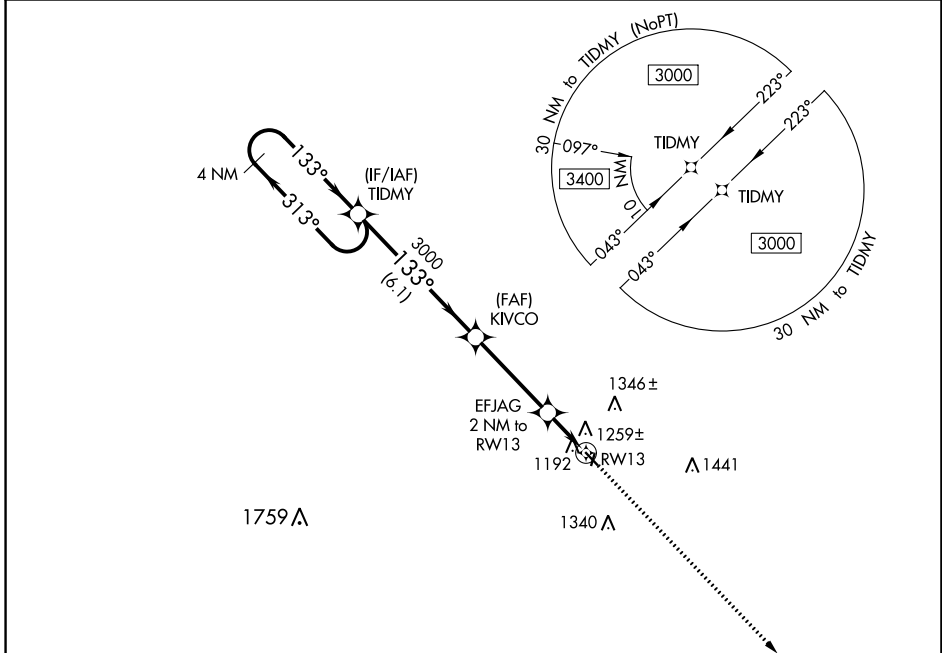
RNAV (GPS) RWY 13

EAGLE GROVE MUNI (EAG)

▽ DME/DME RNP-0.3 NA. Use Clarion altimeter setting, when not received, use Fort Dodge altimeter setting and increase all MDA 20 feet. Helicopter visibility reduction below 1 SM NA. Night Landing: Rwy 13 NA. Circling NA to Rwy 1 and 19.

△ NA MISSED APPROACH: Climb to 3000 direct SAYQU and hold.

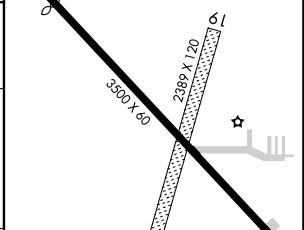
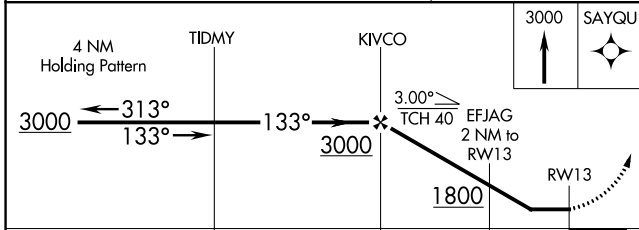
CAV AWOS-3 126.575	MINNEAPOLIS CENTER 134.0 288.3	UNICOM 122.8 (CTAF) 0
------------------------------	--	---------------------------------



NC-3, 28 NOV 2024 to 26 DEC 2024

NC-3, 28 NOV 2024 to 26 DEC 2024

MISSED APCH FIX SAYQU 4 NM 134° 314°	ELEV 1132	TDZE 1132
--	-----------	-----------



CATEGORY	A	B	C	D
LNAV MDA	1540-1	408 (500-1)	NA	
C CIRCLING	1660-1	528 (600-1)	NA	

MIRL Rwy 13-31 **0**
REIL Rwy 13 and 31 **0**