

WAAS CH <b>72634</b> <b>W31A</b>	APP CRS <b>313°</b>	Rwy Idg TDZE Apt Elev	<b>3500</b> <b>1132</b> <b>1132</b>
--	------------------------	-----------------------------	---

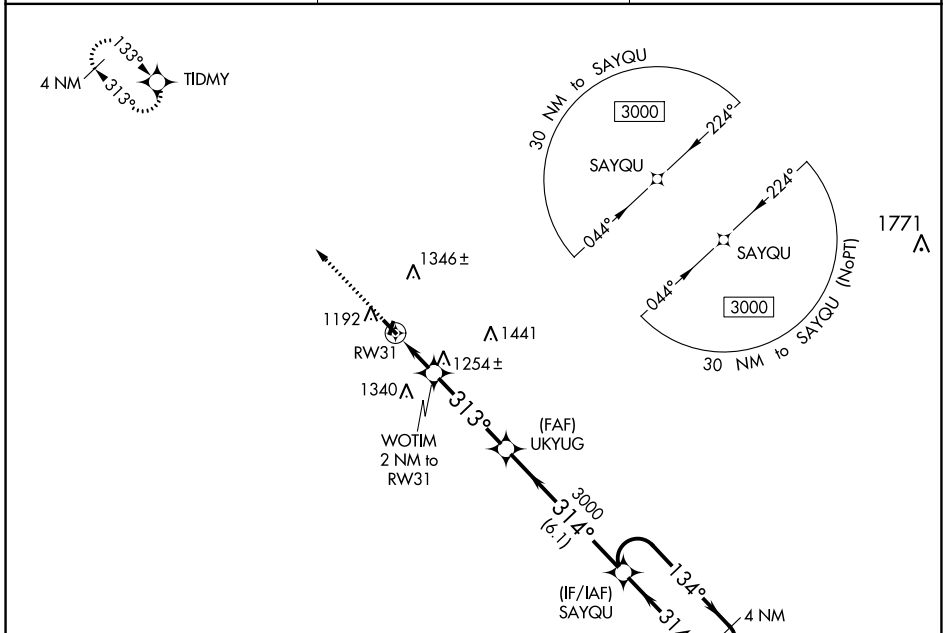
# RNAV (GPS) RWY 31

EAGLE GROVE MUNI (EAG)

**⚠ NA** DME/DME RNP-0.3 NA. Use Clarion altimeter setting, when not received, use Fort Dodge altimeter setting and increase all DA and MDA 20 feet, increase all LPV and LNAV/VNAV Cats visibilities 1/8 mile. Helicopter visibility reduction below 3/4 SM NA. Baro-VNAV NA. Night Landing: Rwy 13 NA. Circling NA to Rwys 1 and 19.

**MISSED APPROACH:** Climb to 3000 direct TIDMY and hold.

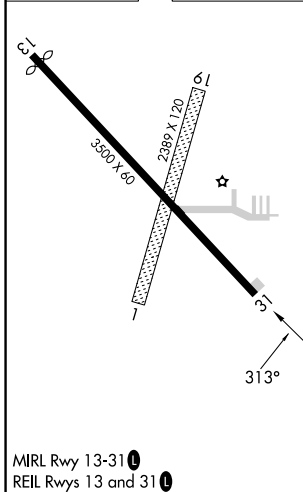
CAV AWOS-3 <b>126.575</b>	MINNEAPOLIS CENTER <b>134.0 288.3</b>	UNICOM <b>122.8 (CTAF) 0</b>
------------------------------	--	---------------------------------



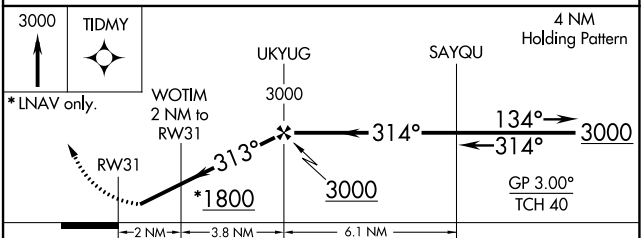
NC-3, 28 NOV 2024 to 26 DEC 2024

NC-3, 28 NOV 2024 to 26 DEC 2024

ELEV 1132	TDZE 1132
-----------	-----------



MIRL Rwy 13-31 **0**  
REIL Rwys 13 and 31 **0**



CATEGORY	A	B	C	D
LPV DA	1510-1¼	378 (400-1¼)		NA
LNAV/VNAV DA	1575-1½	443 (500-1½)		NA
LNAV MDA	1540-1	408 (500-1)		NA
<b>C</b> CIRCLING	1660-1	528 (600-1)		NA