

(CSHEL7.CSHEL) 24305

AL-6757 (FAA)

SOUTHWEST FLORIDA INTL (RSW)

# CSHEL SEVEN DEPARTURE (RNAV)

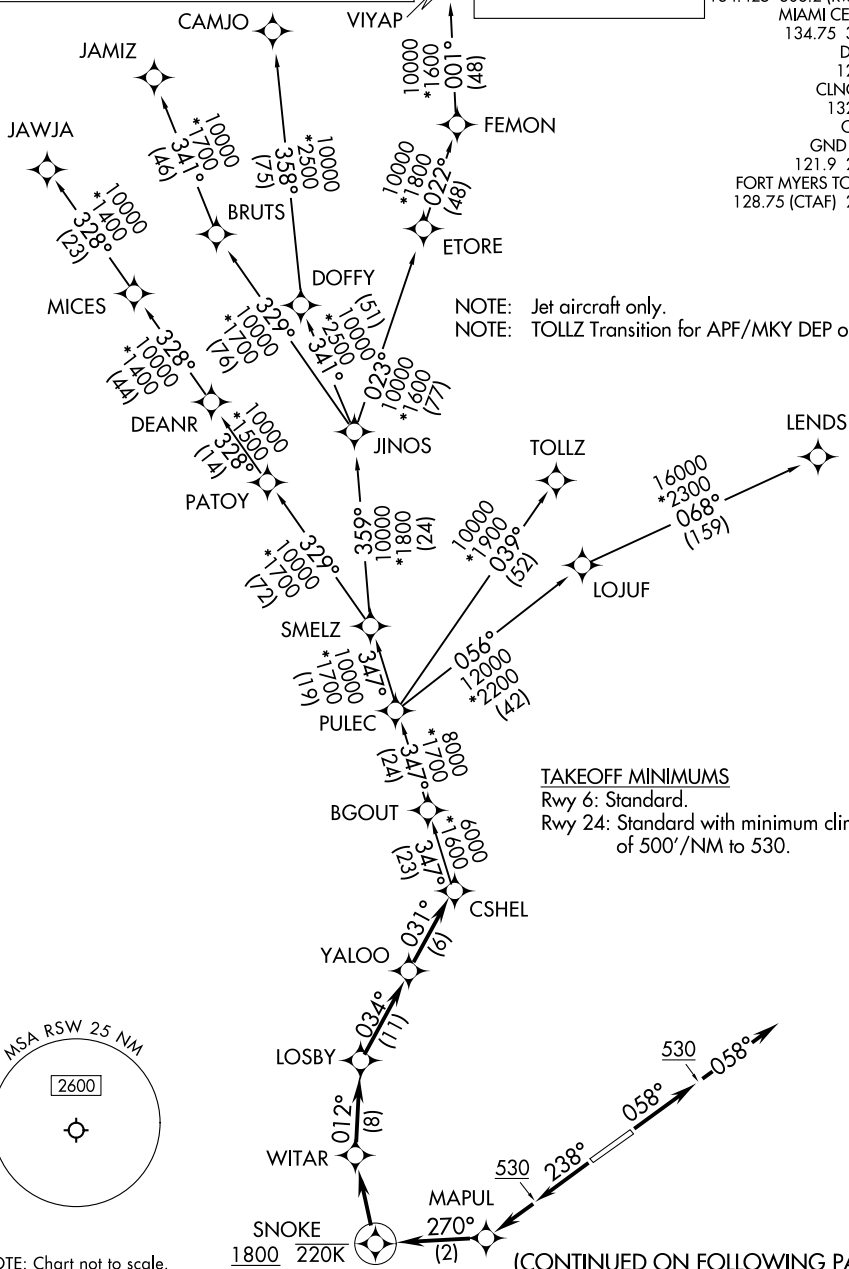
FORT MYERS, FLORIDA

RNAV 1 - DME/DME/IRU or GPS.

RADAR required for non-GPS equipped aircraft.

**TOP ALTITUDE:  
4000**

FORT MYERS DEP CON\*  
 126.8 306.2 (Rwy 6)  
 134.425 306.2 (Rwy 24)  
 MIAMI CENTER  
 134.75 322.5  
 D-ATIS  
 124.65  
 CLNC DEL  
 132.075  
 CPDLC  
 GND CON  
 121.9 257.8  
 FORT MYERS TOWER\*  
 128.75 (CTAF) 257.8



NOTE: Jet aircraft only.  
 NOTE: TOLLZ Transition for APF/MKY DEP only.

TAKEOFF MINIMUMS  
 Rwy 6: Standard.  
 Rwy 24: Standard with minimum climb  
 of 500'/NM to 530.

NOTE: Chart not to scale.

(CONTINUED ON FOLLOWING PAGE)

# CSHEL SEVEN DEPARTURE (RNAV)

FORT MYERS, FLORIDA

(CSHEL7.CSHEL) 31OCT24

SOUTHWEST FLORIDA INTL (RSW)

SE-3, 28 NOV 2024 to 26 DEC 2024

SE-3, 28 NOV 2024 to 26 DEC 2024

# CSHEL SEVEN DEPARTURE (RNAV)



## DEPARTURE ROUTE DESCRIPTION

TAKEOFF RUNWAY 6: Climb on heading 058° to 530, then on heading 058° for RADAR vectors to CSHEL, thence...

TAKEOFF RUNWAY 24: Climb on heading 238° to 530, then continue climb direct MAPUL, then on track 270° to cross SNOKE at or above 1800 and at or below 220K, then right turn direct WITAR, then on track 012° to LOSBY, then on track 034° to YALOO, then on track 031° to CSHEL, thence...

...on assigned transition. Maintain 4000. Expect clearance to filed altitude within 10 minutes after departure.

CAMJO TRANSITION (CSHEL7.CAMJO)

JAMIZ TRANSITION (CSHEL7.JAMIZ)

JAWJA TRANSITION (CSHEL7.JAWJA)

LEND5 TRANSITION (CSHEL7.LEND5)

TOLLZ TRANSITION (CSHEL7.TOLLZ)

VIYAP TRANSITION (CSHEL7.VIYAP)

SE-3, 28 NOV 2024 to 26 DEC 2024

SE-3, 28 NOV 2024 to 26 DEC 2024