

WAAS CH 97534 W35A	APP CRS 354°	Rwy Idg 5100 TDZE 1605 Apt Elev 1605
----------------------------------------	------------------------	-----------------------------------------------------------------

RNAV (GPS) RWY 35

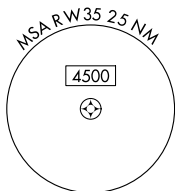
WEATHERFORD STAFFORD (OJA)

RNP APCH.

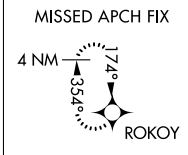
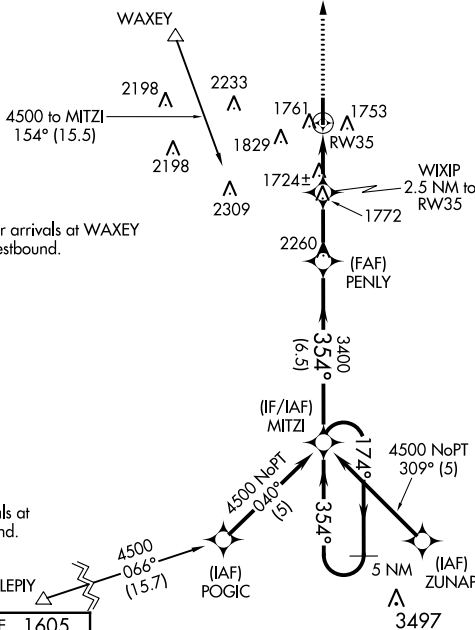
⚠ Straight-in Rwy 35 at night, Circling Rwy 17 at night, operational VGSI required, remain on or above VGSI glidepath until threshold. Rwy 17 helicopter visibility below 1 SM NA. When local altimeter setting not received, use Clinton Rgnl altimeter setting: increase all MDA 40 feet and visibility Cat C ¼ mile.

MISSED APPROACH:
Climb to 4000 direct ROKOY and hold.

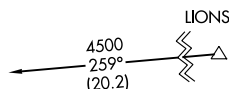
AWOS-3PT 118.575	FORT WORTH CENTER 128.4 269.37	UNICOM 122.8 (CTAF) 0
----------------------------	------------------------------------------	---------------------------------



Procedure NA for arrivals at WAXEY on V210-507 westbound.

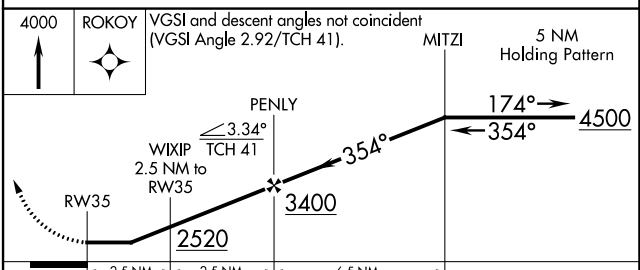
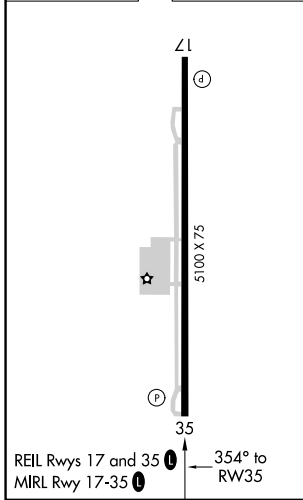


Procedure NA for arrivals at LIONS on V272 eastbound.



Procedure NA for arrivals at LEPIY on V440 westbound.

ELEV 1605	TDZE 1605
-----------	-----------



CATEGORY	A	B	C	D
LP MDA	1980-1 375 (400-1)			NA
LNAV MDA	2020-1 415 (500-1)	2020-1 1/8 415 (500-1 1/8)		NA
CIRCLING	2080-1 475 (500-1)	2140-1 535 (600-1)	2380-2 1/4 775 (800-2 1/4)	NA