

WAAS CH <b>93726</b> <b>W36A</b>	APP CRS <b>358°</b>	Rwy Idg TDZE Apt Elev	<b>3001</b> <b>1434</b> <b>1434</b>
--	------------------------	-----------------------------	---

# RNAV (GPS) RWY 36

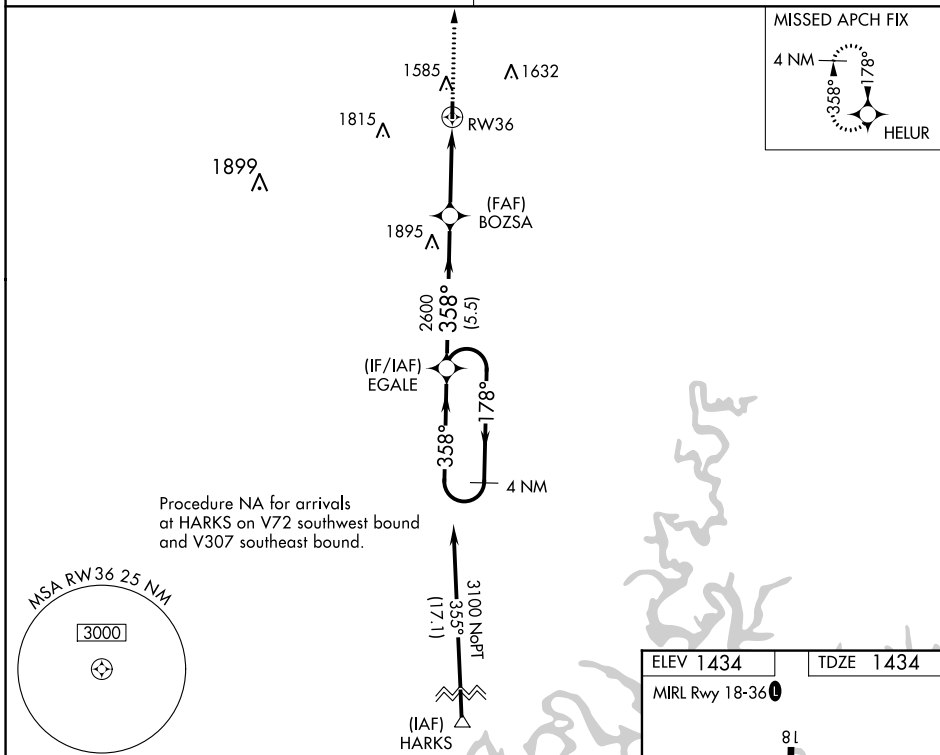
JERRY SUMNERS SR AURORA MUNI (2H2)

RNP APCH. **NA** Use Springfield altimeter setting; when not received, use Branson altimeter setting and increase all MDA 40 feet. Procedure NA at night. Rwy 36 helicopter visibility reduction below 1 SM NA.

MISSED APPROACH: Climb to 3000 direct HELUR and hold.

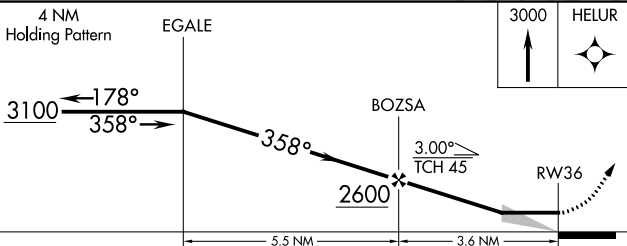
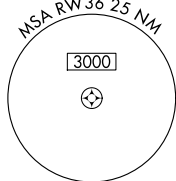
SPRINGFIELD APP CON  
**124.95 318.2**

UNICOM  
**122.8 (CTAF) 0**

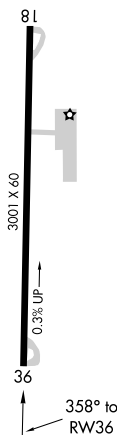


NC-3, 28 NOV 2024 to 26 DEC 2024

NC-3, 28 NOV 2024 to 26 DEC 2024



ELEV 1434	TDZE 1434
MIRL Rwy 18-36 0	



CATEGORY	A	B	C	D
LP MDA	2060-1	626 (700-1)		NA
LNAV MDA	2060-1	626 (700-1)		NA
CIRCLING	2060-1 626 (700-1)	2080-1 646 (700-1)		NA