

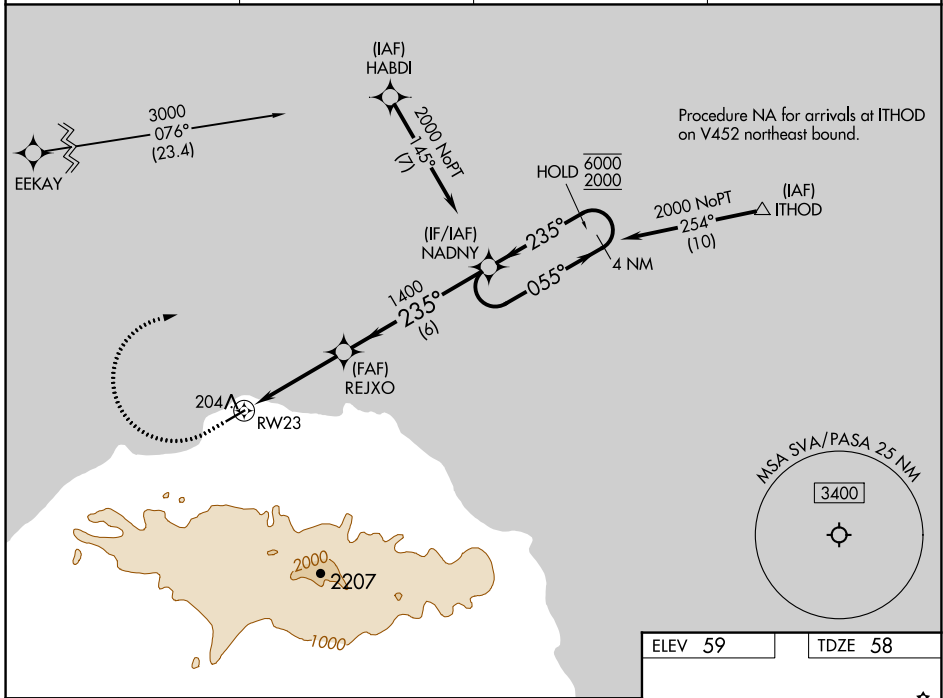
WAAS CH 58245 W23A	APP CRS 235°	Rwy Idg TDZE Apt Elev	4400 58 59
--	------------------------	-----------------------------	---------------------------------------

RNAV (GPS) RWY 23

SAVOONGA (SVA) (PASA)

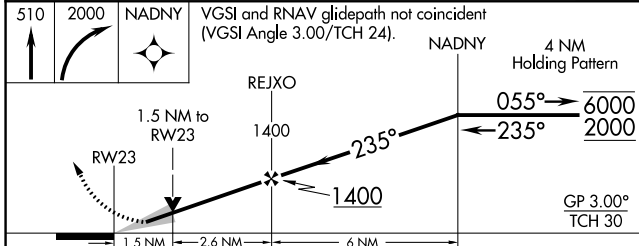
RNP APCH - GPS.	MISSED APPROACH: Climb to 510 then climbing right turn to 2000 direct NADNY and hold.
<p>⚠ For uncompensated Baro-VNAV systems, LNAV/VNAV NA below -22°C or above 54°C. Circling NA southeast of Rwy 5-23.</p>	

AWOS-3P 121.3	ANCHORAGE CENTER 132.2 281.4	NOME RADIO 122.3	CTAF 122.7
-------------------------	--	----------------------------	----------------------

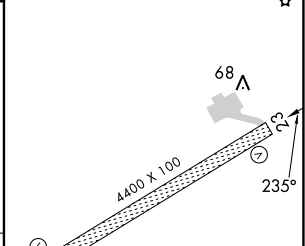


AK, 31 OCT 2024 to 26 DEC 2024

AK, 31 OCT 2024 to 26 DEC 2024



ELEV 59	TDZE 58
---------	---------



CATEGORY	A	B	C	D
LPV DA	308-1 250 (300-1)			
LNAV/VNAV DA	408-1 350 (400-1)			
LNAV MDA	460-1 402 (500-1)	460-1 1/8 402 (500-1 1/8)		
CIRCLING	520-1 461 (500-1)	780-2 721 (800-2)	1100-3 1041 (1100-3)	

MIRL Rwy 5-23
