

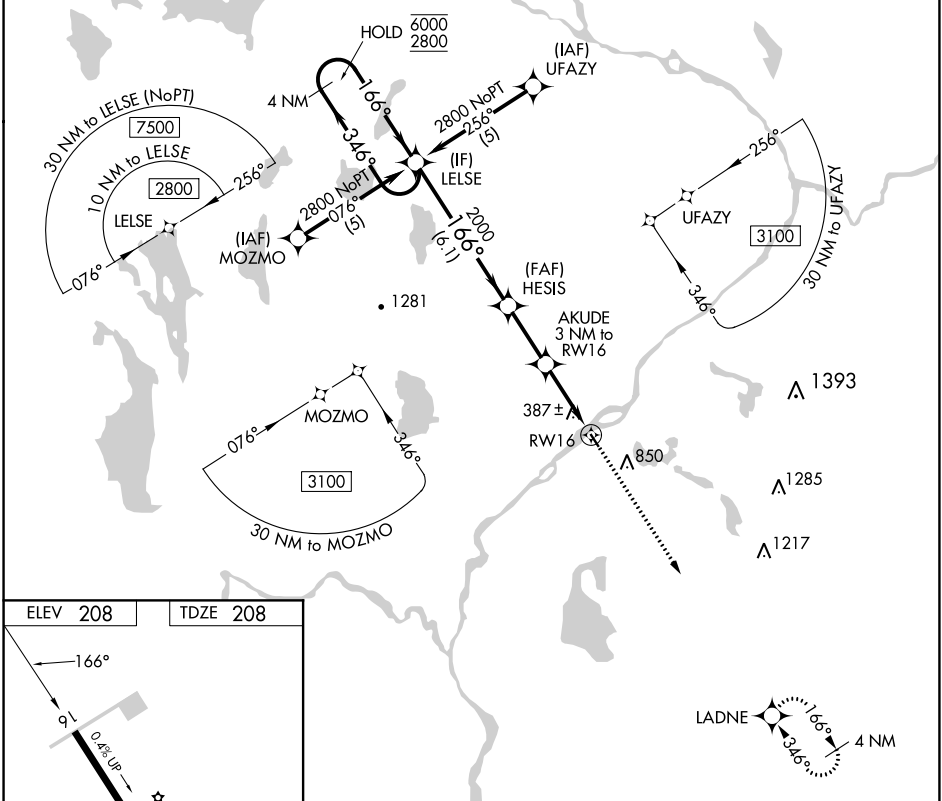
APP CRS	Rwy Idg	2805
166°	TDZE	208
	Apt Elev	208

RNAV (GPS) RWY 16

LINCOLN RGNL (L.R.G)

RNP APCH - GPS.	MISSED APPROACH: Climb to 3100 direct LADNE and hold.
<p>Procedure NA at night. Rwy 16 helicopter visibility reduction below 1 SM NA. Use Millinocket altimeter setting, when not received use Bangor Intl altimeter setting and increase all MDA 20 feet.</p>	

MLT ASOS 135.225	BOSTON CENTER 124.25 290.5	UNICOM 122.8 (CTAF) 0
----------------------------	--------------------------------------	---------------------------------



NE-1, 28 NOV 2024 to 26 DEC 2024

NE-1, 28 NOV 2024 to 26 DEC 2024

ELEV 208	TDZE 208
----------	----------

WATER RWY: 06W - 24W
2400 X 100

MIRL Rwy 16-34 **0**
REIL Rws 16 and 34 **4**

4 NM Holding Pattern	LELSE	Visual Segment - Obstacles.	3100	LADNE
6000 ← 346°	2800 → 166°			
		HESIS	AKUDE 3 NM to RWY16	RWY16
		2000	1200	
		6.1 NM	2.5 NM	3 NM
CATEGORY	A	B	C	D
LNAV MDA	900-1	692 (700-1)		NA