

WAAS CH 50205 W12A	APP CRS 123°	Rwy Idg 5499 TDZE 241 Apt Elev 247
--	------------------------	---

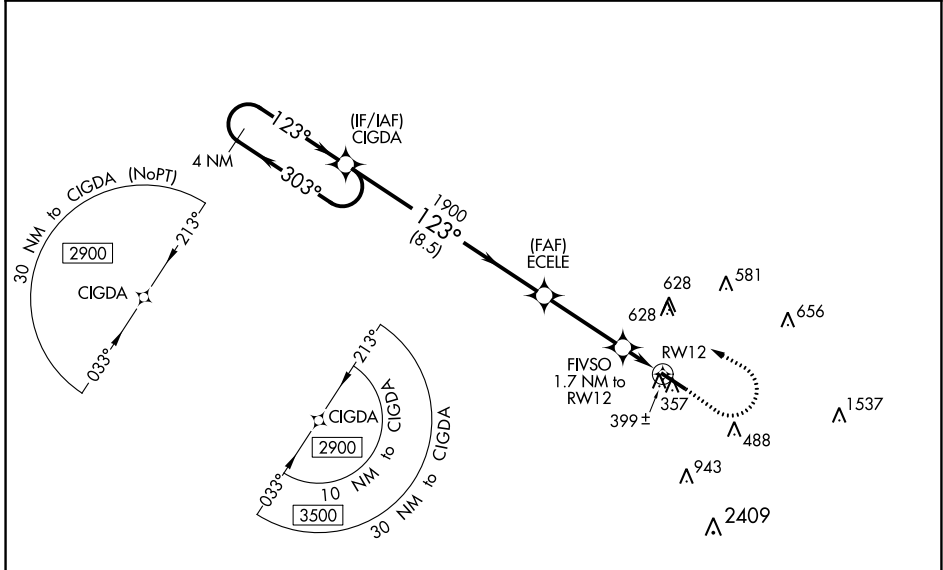
RNAV (GPS) RWY 12

JOHN BELL WILLIAMS (J V W)

⚠ For uncompensated Baro-VNAV systems, LNAV/VNAV NA below -15°C (5°F) or above 54°C (130°F). DME/DME RNP-0.3 NA. Circling NA for Cat D southwest of Rwy 12-30. Baro-VNAV and VDP NA when using Hawkins Fld altimeter setting. Helicopter visibility reduction below ¼ SM NA. When local altimeter setting not received, use Hawkins Fld altimeter setting: increase all DA 36 feet, all MDA 40 feet, all LNAV/VNAV visibilities ½ mile, LNAV Cat C and D visibilities ¼ mile, and Circling Cat C and D visibility ¼ mile.

MISSED APPROACH: Climb to 800 then climbing left turn to 2900 direct CIGDA and hold.

AWOS-3PT 118.675	JACKSON APP CON* 125.25 319.2	UNICOM 123.0 (CTAF) 0
----------------------------	---	--



SC-4, 28 NOV 2024 to 26 DEC 2024

SC-4, 28 NOV 2024 to 26 DEC 2024

4 NM Holding Pattern		VGSI and RNAV glidepath not coincident (VGSI Angle 3.00/TCH 38).		800	2900	CIGDA
2900 ← 303°		CIGDA		↑	↪	✦
GP 3.00° TCH 47		ECELE 1900		*LNAV only		
123° →		FIVSO 1.7 NM to RWY 12		123° to RWY 12		
1900		*820		RWY 12		
8.5 NM		3.4 NM		0.5 1.2		
CATEGORY	A	B	C	D		
LPV DA		441-¾	200 (200-¾)			
LNAV/VNAV DA		662-1⅓	421 (500-1⅓)			
LNAV MDA	660-1	419 (500-1)	660-1⅓	419 (500-1⅓)		
C CIRCLING	800-1	553 (600-1)	980-2 733 (800-2)	980-2¼ 733 (800-2¼)		

