

WAAS CH 53535 W18A	APP CRS 182°	Rwy Idg 3197 TDZE 337 Apt Elev 337
--	------------------------	---

RNAV (GPS) RWY 18

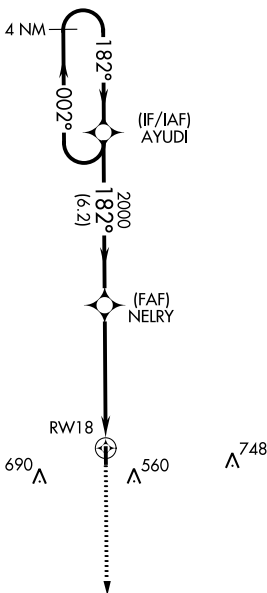
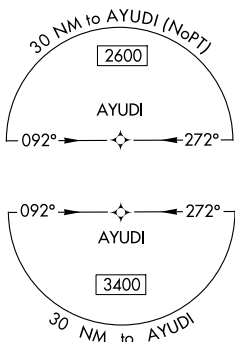
OKOLONA MUNI/RICHARD STOVALL FLD (5A4)

NA Baro-VNAV NA. DME/DME RNP-0.3 NA. Use Tupelo altimeter setting; when not received, use Columbus Air Force Base altimeter setting and increase all DA 41 feet and all MDA 60 feet, increase LPV and LNAV/VNAV all Cats visibility 1/8 mile, LNAV Cat C visibility 1/2 mile. Rwy 18 helicopter visibility reduction below 3/4 SM NA.

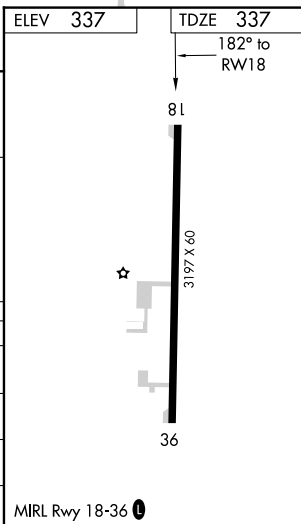
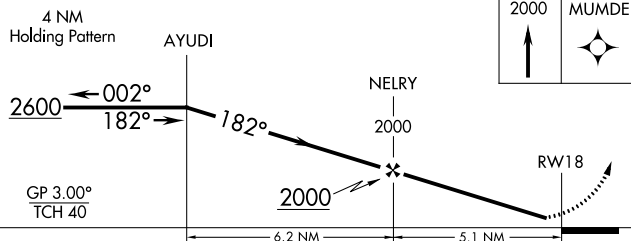
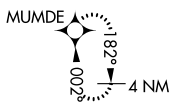
MISSED APPROACH: Climb to 2000 direct MUMDE and hold.

COLUMBUS APP CON ★
126.075 229.15

CTAF
122.9 0



MISSED APCH FIX



CATEGORY	A	B	C	D
LPV DA	624-1 287 (300-1)			NA
LNAV/VNAV DA	669-1 332 (400-1 1/8)			NA
LNAV MDA	820-1 483 (500-1)	820-1 483 (500-1 3/8)		NA
C CIRCLING	920-1 583 (600-1)	1080-2 743 (800-2 1/4)		NA

MIRL Rwy 18-36 0

SC-4, 28 NOV 2024 to 26 DEC 2024

SC-4, 28 NOV 2024 to 26 DEC 2024