

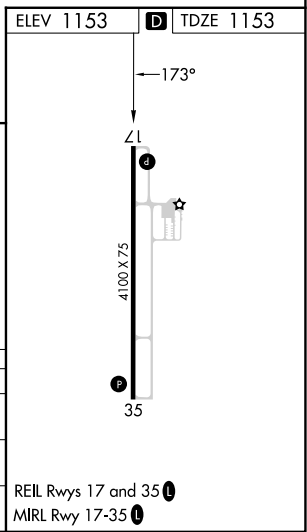
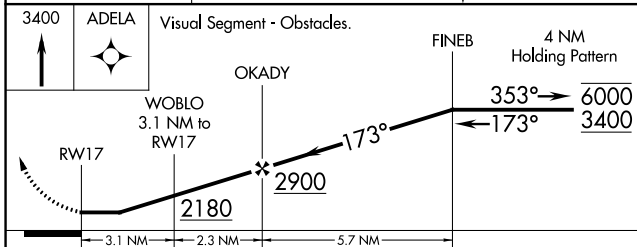
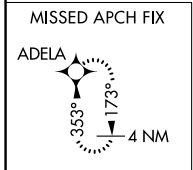
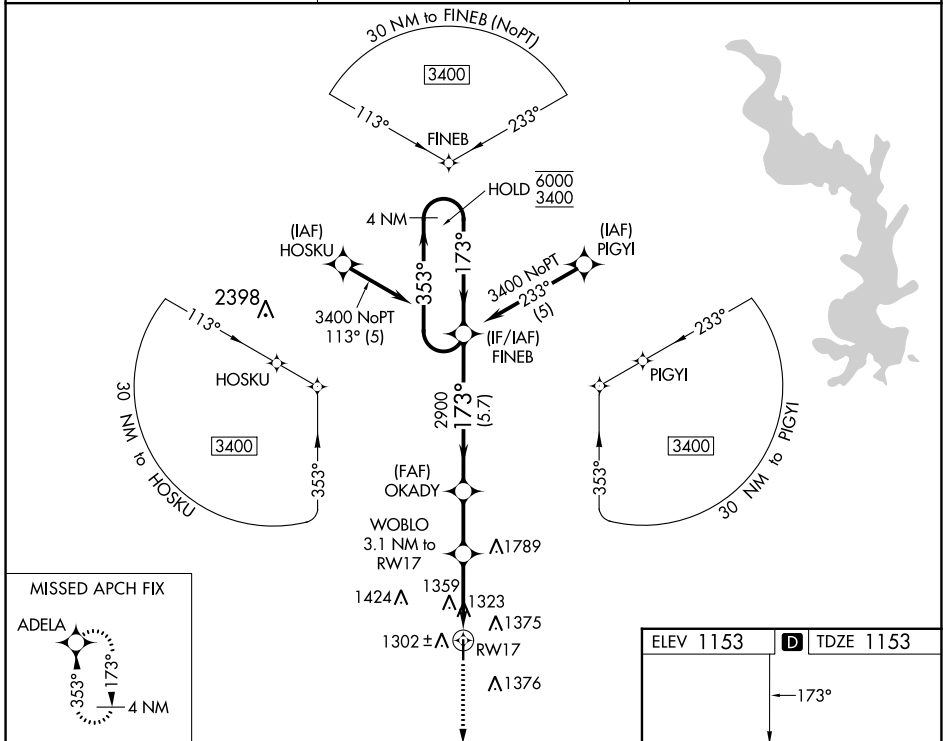
WAAS CH <b>63234</b> <b>W17A</b>	APP CRS <b>173°</b>	Rwy Idg <b>4100</b> TDZE <b>1153</b> Apt Elev <b>1153</b>
--	------------------------	---

# RNAV (GPS) RWY 17

ABILENE MUNI (K78)

RNP APCH - GPS.	MISSED APPROACH: Climb to 3400 direct ADELA and hold.
<p><b>⚠</b> Rwy 17 helicopter visibility reduction below 1 SM NA. Straight-in Rwy 17 NA at night, Circling Rwy 17 NA at night. When local altimeter setting not received, use Salina altimeter setting and increase Circling Cat A and B MDA 80 feet.</p>	

AWOS-2 <b>124.125</b>	MARSHALL GCA* <b>121.25 254.35</b>	UNICOM <b>122.8 (CTAF)</b>
--------------------------	---------------------------------------	-------------------------------



CATEGORY	A	B	C	D
LP MDA	1640-1	487 (500-1)	1640-1 <sup>3</sup> / <sub>8</sub> 487 (500-1 <sup>3</sup> / <sub>8</sub> )	NA
LNAV MDA	1680-1	527 (600-1)	1680-1 <sup>1</sup> / <sub>2</sub> 527 (600-1 <sup>1</sup> / <sub>2</sub> )	NA
<b>C</b> CIRCLING	1740-1	587 (600-1)	1980-2 <sup>1</sup> / <sub>2</sub> 827 (900-2 <sup>1</sup> / <sub>2</sub> )	NA

NC-2, 28 NOV 2024 to 26 DEC 2024

NC-2, 28 NOV 2024 to 26 DEC 2024