

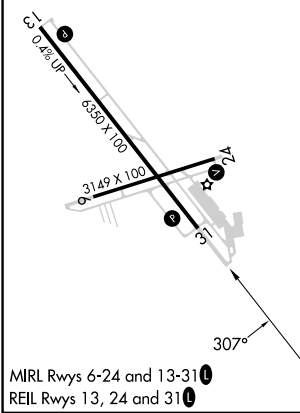
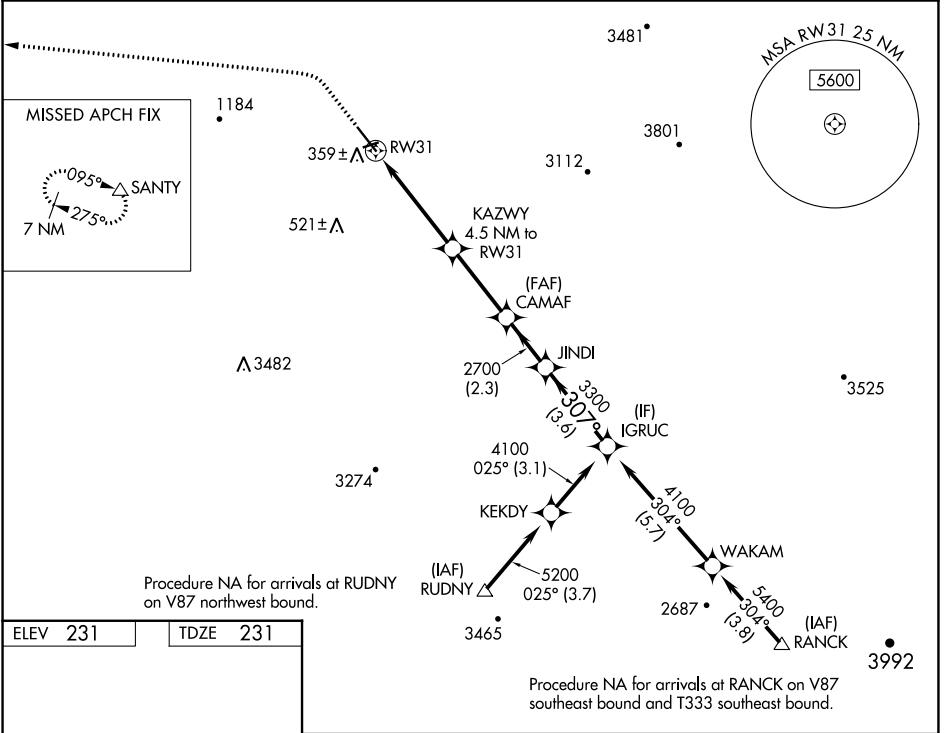
WAAS CH <b>93806</b> <b>W31A</b>	APP CRS <b>307°</b>	Rwy Idg TDZE Apt Elev	<b>6350</b> <b>231</b> <b>231</b>
----------------------------------------	------------------------	-----------------------------	-----------------------------------------

# RNAV (GPS) RWY 31

HOLLISTER MUNI (CVH)

RNP APCH - GPS.	MISSED APPROACH: Climb to 1200, then climbing left turn to 7000 direct SANTY and hold, continue climb-in-hold to 7000.
<p>▼ Rwy 31 helicopter visibility reduction below ¼ SM NA.</p> <p>▲ For uncompensated Baro-VNAV systems, LNAV/VNAV NA below -15°C or above 54°C.</p>	

AWOS-3 <b>120.425</b>	NORCAL APP CON <b>124.525 348.675</b>	UNICOM <b>123.0 (CTAF) 0</b>
--------------------------	------------------------------------------	---------------------------------



1200	7000	SANTY		
<p>2.3 NM</p> <p>2.2 NM</p> <p>3.1 NM</p> <p>2.3 NM</p> <p>3.6 NM</p>		<p>2.3 NM to RW31</p> <p>4.5 NM to RW31</p> <p>2700</p> <p>3300</p> <p>307°</p> <p>4100</p> <p>GP 3.00° TCH 44</p>		
CATEGORY	A	B	C	D
LPV DA	657-1¼ 426 (500-1¼)			NA
LNAV/VNAV DA	750-1⅜ 519 (600-1⅜)			NA
LNAV MDA	1000-1 769 (800-1)	1000-1¼ 769 (800-1¼)	1000-2½ 769 (800-2½)	NA

SW-2, 28 NOV 2024 to 26 DEC 2024

SW-2, 28 NOV 2024 to 26 DEC 2024