

WAAS CH 72837 W35A	APP CRS 354°	Rwy ldg TDZE Apt Elev	3501 2702 2707
----------------------------------------	------------------------	-----------------------------	-------------------------------------------

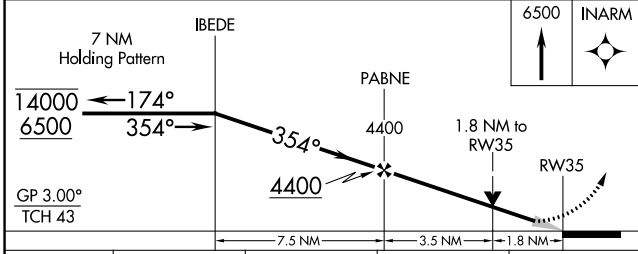
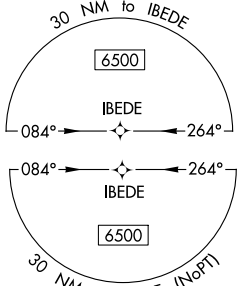
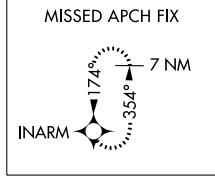
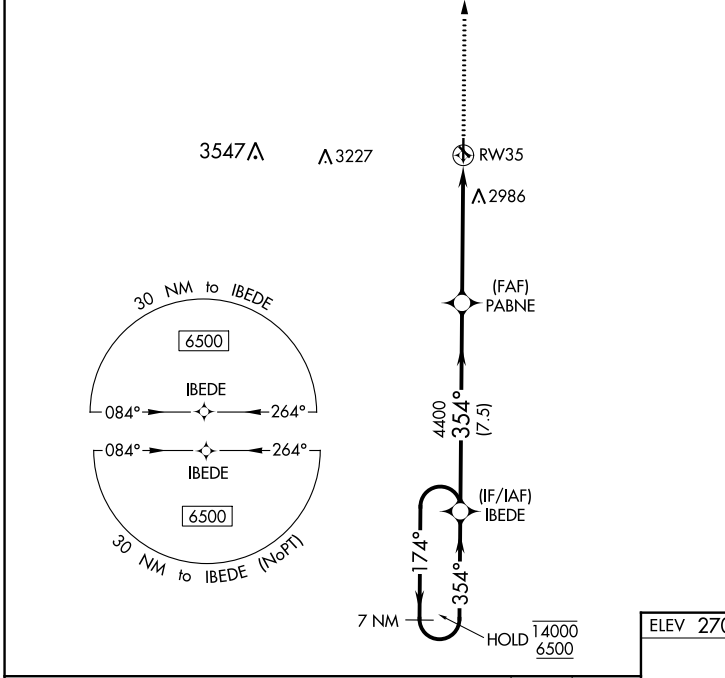
RNAV (GPS) RWY 35

OBERLIN MUNI (OIN)

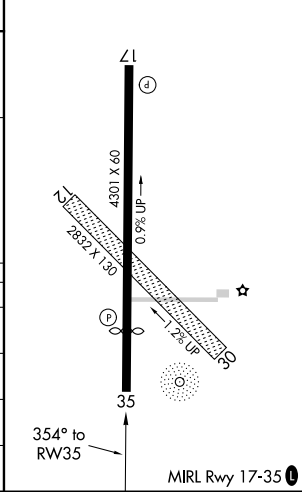
RNP APCH-GPS.
 ⚠ Circling to Rwy 12, 17, 30 NA at night. For uncompensated Baro-VNAV systems, LNAV/VNAV NA below -20°C or above 54°C.

MISSED APPROACH: Climb to 6500 direct INARM and hold, continue climb-in-hold to 6500.

AWOS-3 119.225	DENVER CENTER 132.7 226.675	UNICOM 122.8 (CTAF)
--------------------------	---------------------------------------	-------------------------------



ELEV 2707		TDZE 2702
-----------	--	-----------



CATEGORY	A	B	C	D
LPV DA	2902-1 200 (200-1)			NA
LNAV/VNAV DA	3300-1¾ 598 (600-1¾)			NA
LNAV MDA	3300-1 598 (600-1)	3300-1¾ 598 (600-1¾)		NA
CIRCLING	3300-1 593 (600-1)	3340-1 633 (700-1)	3340-1¾ 633 (700-1¾)	NA

NC-2, 28 NOV 2024 to 26 DEC 2024

NC-2, 28 NOV 2024 to 26 DEC 2024