

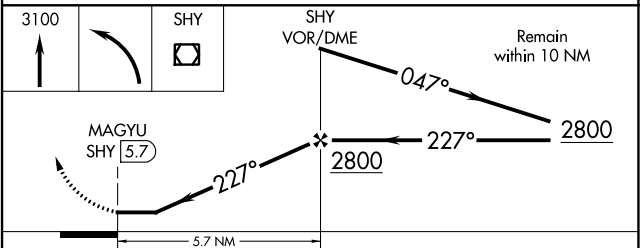
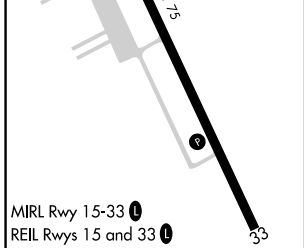
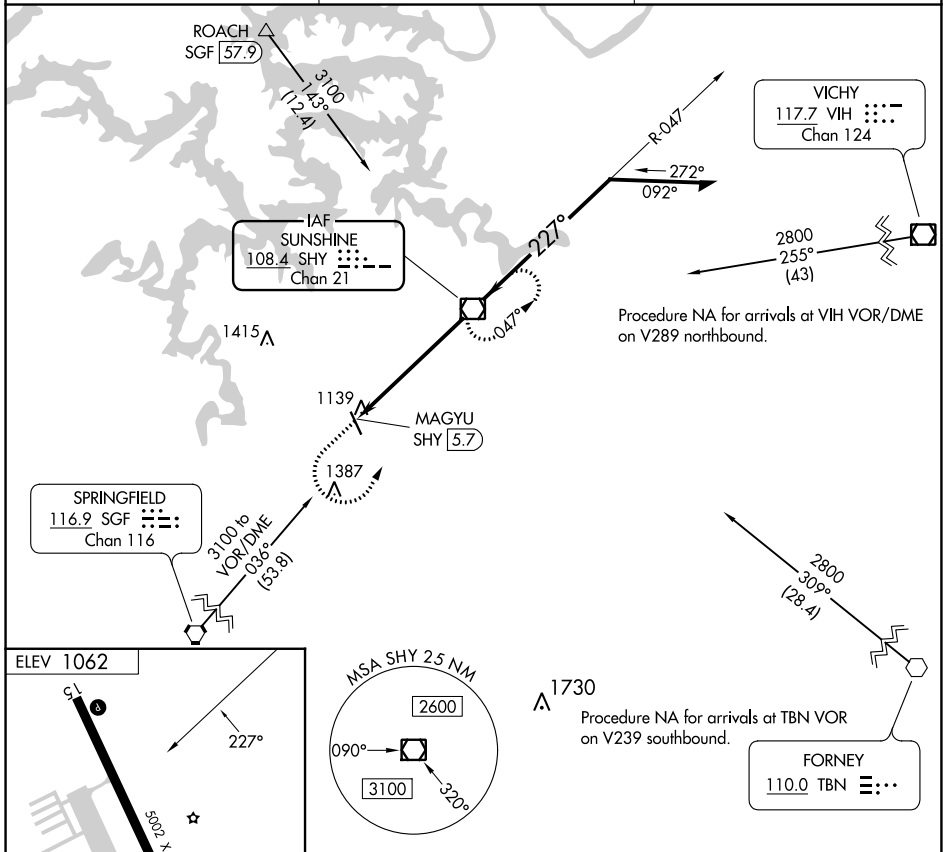
VOR/DME SHY 108.4 Chan 21	APP CRS 227°	Rwy Idg TDZE Apt Elev 1062	N/A N/A
--	------------------------	---	--------------------------

VOR-A

CAMDENTON MEML-LAKE RGNL (OZS)

NA	MISSED APPROACH: Climb to 3100 then left turn direct SHY VOR/DME and hold.
----	--

AWOS-3PT 120.225	MIZU APP CON 124.1 353.925	UNICOM 122.8 (CTAF)
----------------------------	--------------------------------------	-------------------------------



FAF to MAP 5.7 NM					
Knots	60	90	120	150	180
Min:Sec	5:42	3:48	2:51	2:17	1:54
CATEGORY	A	B	C	D	
CIRCLING	1520-1	458 (500-1)	1700-1¾ 638 (700-1¾)	NA	

NC-3, 28 NOV 2024 to 26 DEC 2024

NC-3, 28 NOV 2024 to 26 DEC 2024