

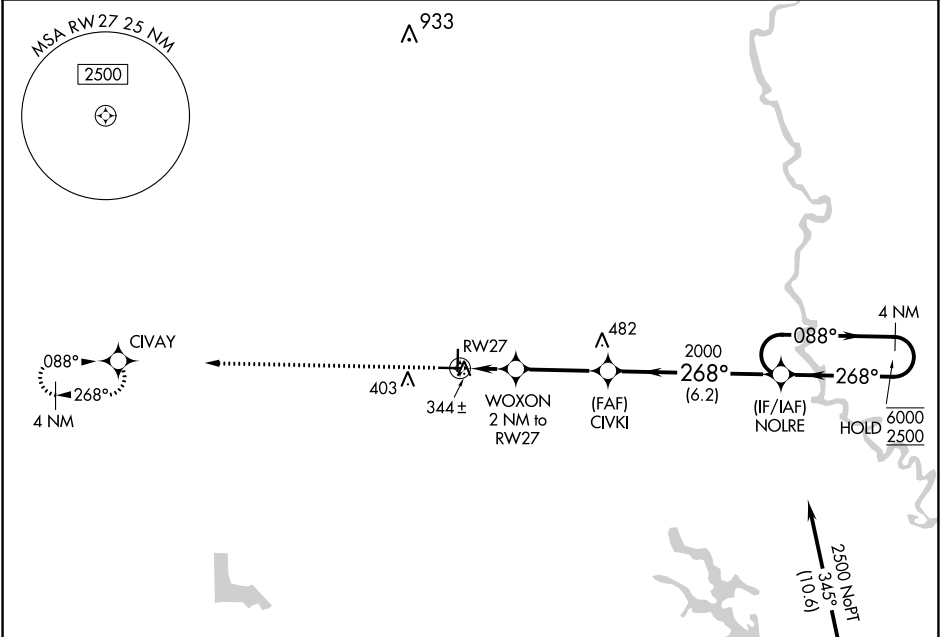
APP CRS	Rwy Idg	<b>4501</b>
<b>268°</b>	TDZE	<b>241</b>
	Apt Elev	<b>241</b>

# RNAV (GPS) RWY 27

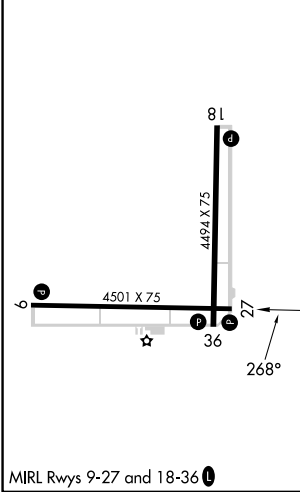
CARLISLE MUNI (4M3)

RNP APCH-GPS.	<p>MISSED APPROACH: Climb to 2500 direct CIVAY and hold.</p>
<p>Procedure NA at night. Rwy 27 helicopter visibility reduction below 1 SM NA.</p> <p>When local altimeter setting not received, use Stuttgart altimeter setting.</p>	

AWOS-2 <b>119.275</b>	LITTLE ROCK APP CON <b>135.4 353.6</b>	CLNC DEL <b>135.4</b>	UNICOM <b>122.8 (CTAF)</b>
--------------------------	---	--------------------------	-------------------------------



ELEV 241	TDZE 241
----------	----------



2500	CIVAY	4 NM Holding Pattern	
↑	✧	NOLRE	4 NM
		WOXON 2 NM to RWY 27	CIVKI
		2000	088° → 6000
		920	← 268° 2500
		2 NM	3.3 NM
		6.2 NM	
CATEGORY	A	B	C D
LNAV MDA	640-1	399 (400-1)	NA

SC-1, 28 NOV 2024 to 26 DEC 2024

SC-1, 28 NOV 2024 to 26 DEC 2024