

WAAS CH 99519 W16A	APP CRS 156°	Rwy Idg 4701
		TDZE 2384
		Apt Elev 2384

RNAV (GPS) RWY 16

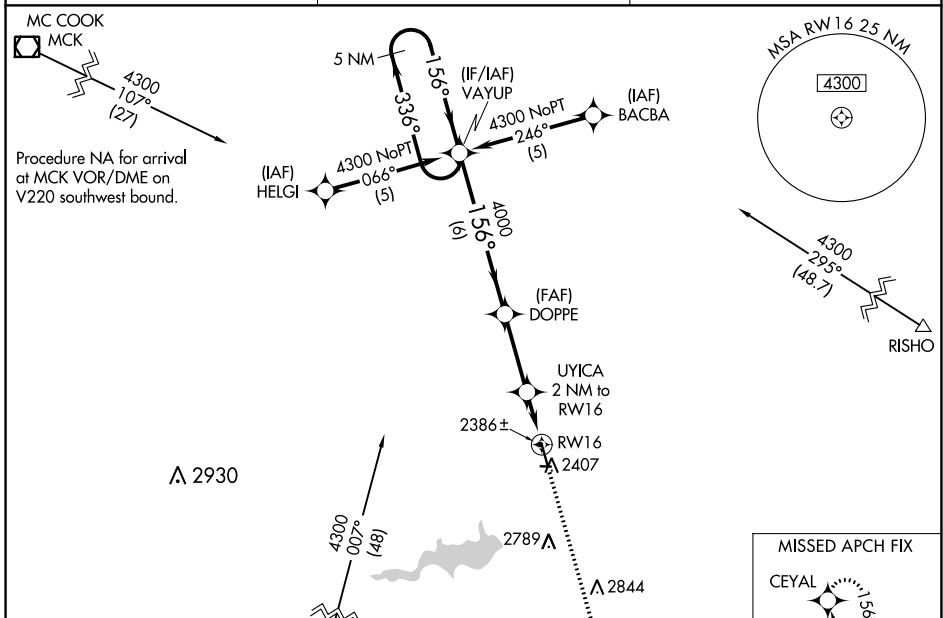
NORTON MUNI (N.R.N)

RNP APCH - GPS.

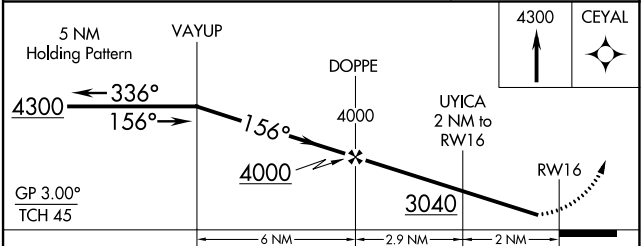
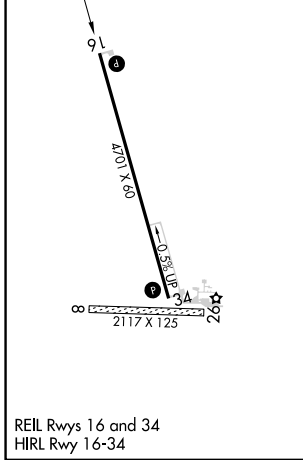
▼ Baro-VNAV NA when using Hill City Muni altimeter setting. For uncompensated Baro-VNAV systems, LNAV/VNAV NA below -19°C or above 54°C. When local altimeter not received, use Hill City Muni altimeter setting and increase LPV DA to 2720 feet, LNAV/VNAV DA to 2742 feet, all MDA 100 feet, LNAV Cat C visibility ¼ SM, Circling Cat C visibility ½ SM.

MISSED APPROACH: Climb to 4300 direct CEYAL and hold.

AWOS-3 118.275	DENVER CENTER 132.7 226.675	CTAF 122.9
--------------------------	---------------------------------------	----------------------



ELEV 2384	TDZE 2384
------------------	------------------



CATEGORY	A	B	C	D
LPV DA		2634-1	250 (300-1)	NA
LNAV/VNAV DA		2656-1	272 (300-1)	NA
LNAV MDA	2840-1	456 (500-1)	2840-1 3/8 456 (500-1 3/8)	NA
CIRCLING	2880-1	496 (500-1)	3100-2 716 (800-2)	NA

NC-2, 28 NOV 2024 to 26 DEC 2024

NC-2, 28 NOV 2024 to 26 DEC 2024