

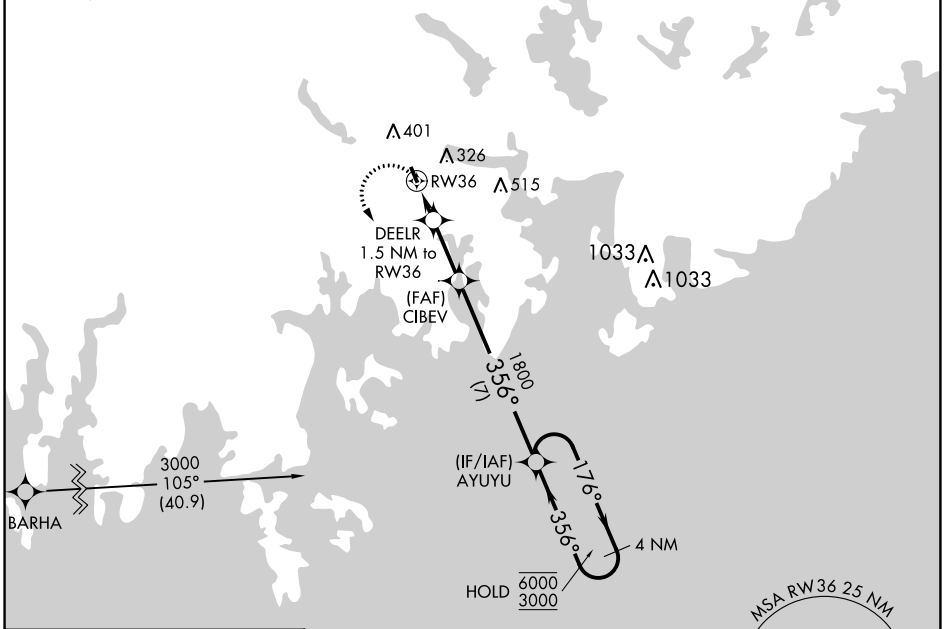
APP CRS	Rwy Idg	<b>2880</b>
<b>356°</b>	TDZE	<b>96</b>
	Apt Elev	<b>96</b>

# RNAV (GPS) RWY 36

MACHIAS VALLEY (MVM)

RNP APCH - GPS.	MISSED APPROACH: Climbing left turn to 3000 direct AYUYU and hold, continue climb-in-hold to 3000.
▼ Helicopter visibility reduction below 1 SM NA. Procedure NA at night.	
▲ NA For uncompensated Baro-VNAV systems, LNAV/VNAV NA below -15°C or above 54°C.	

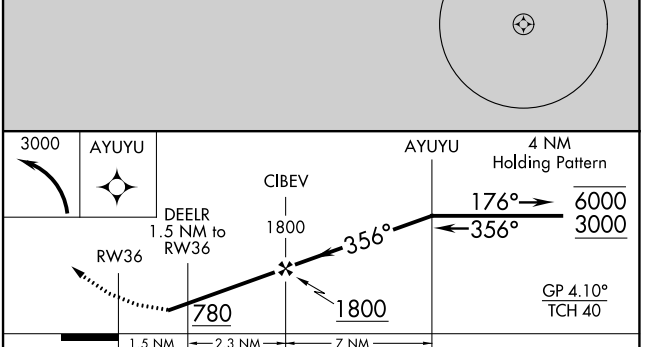
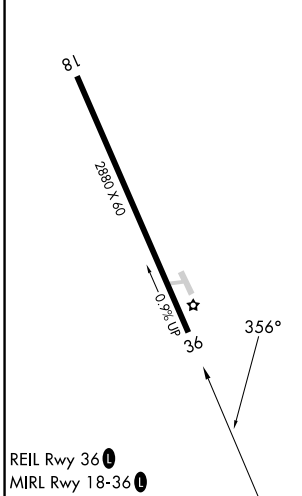
AWOS-AV <b>122.8</b>	BOSTON CENTER <b>124.25 290.5</b>	UNICOM <b>122.8 (CTAF) 0</b>
-------------------------	--------------------------------------	---------------------------------



NE-1, 28 NOV 2024 to 26 DEC 2024

NE-1, 28 NOV 2024 to 26 DEC 2024

ELEV	96	TDZE	96
------	----	------	----



CATEGORY	A	B	C	D
LNAV/VNAV DA	678-1¾	582 (600-1¾)		NA
LNAV MDA	580-1	484 (500-1)		NA
CIRCLING	700-1 604 (700-1)	760-1 664 (700-1)		NA