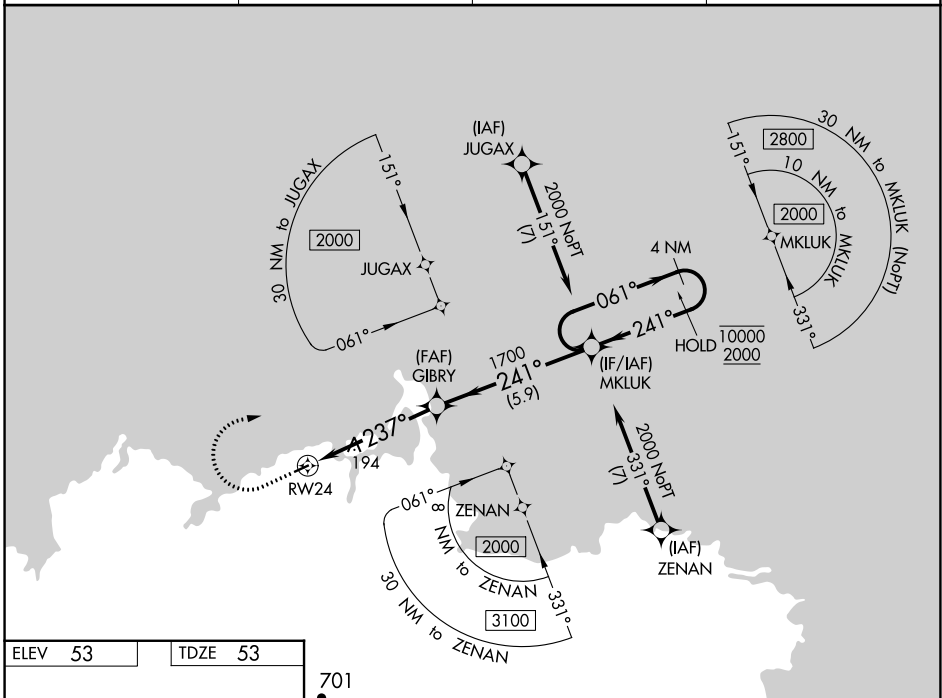


WAAS CH <b>82743</b> <b>W24A</b>	APP CRS <b>237°</b>	Rwy Idg TDZE Apt Elev	<b>3001</b> <b>53</b> <b>53</b>
--	------------------------	-----------------------------	---------------------------------------

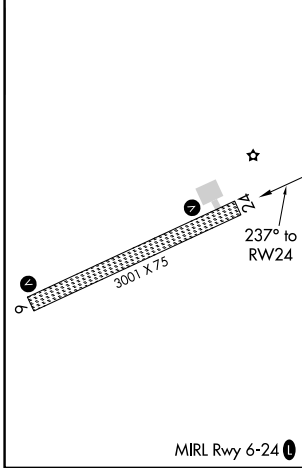
# RNAV (GPS) RWY 24

MEKORYUK (MYU) (PAMY)

RNP APCH-GPS.		MISSED APPROACH: Climb to 520 then climbing right turn to 2000 direct MKLUK and hold.	
Circling NA southeast of Rwy 6-24.		AWOS-3P <b>123.9</b>	ANCHORAGE CENTER <b>124.5 372.0</b>
		KENAI RADIO <b>122.0</b>	CTAF <b>122.9 0</b>



ELEV 53	TDZE 53
---------	---------



	701	520	2000	MKLUK	
					4 NM Holding Pattern
				GIBRY	MKLUK
				1700	1700
				1.2 NM to RW24	3.9 NM
				5.9 NM	
				061°	241°
				10000	2000
					GP 3.00°
					TCH 30
CATEGORY	A	B	C	D	
LPV DA		303-1	250 (300-1)		
LNAV/VNAV DA		303-1	250 (300-1)		
LNAV MDA	460-1	407 (500-1)	460-1½	407 (500-1½)	
CIRCLING	460-1 407 (500-1)	640-1 587 (600-1)	660-1¾ 607 (700-1¾)	860-2½ 807 (900-2½)	

AK, 31 OCT 2024 to 26 DEC 2024

AK, 31 OCT 2024 to 26 DEC 2024