

GARLAND FIVE DEPARTURE
(GARL5.TT) 25JAN24

ENNIS, TEXAS
ENNIS MUNI (F41)

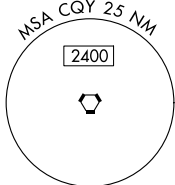
LONE STAR DEP CON
125.2 343.65
CTAF
122.9

**TOP ALTITUDE:
ASSIGNED BY ATC**

TAKEOFF MINIMUMS
Rwys 16, 34: Standard.

NOTE: SOLDO Transition: ATC assigned.

MAVERICK
113.1 TTT
Chan 78

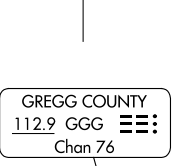
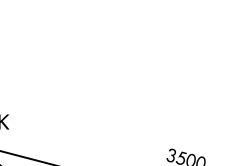
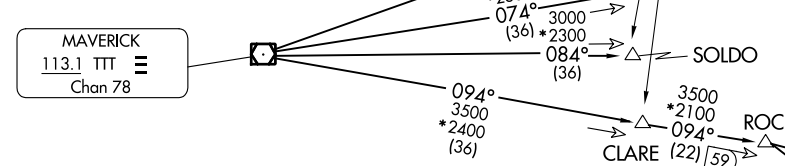
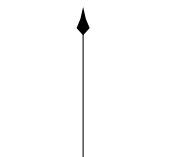
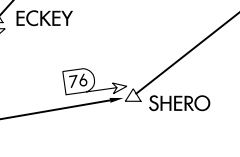
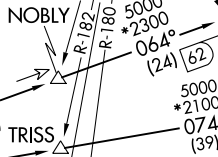
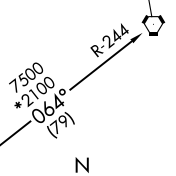
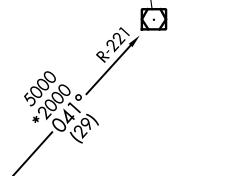
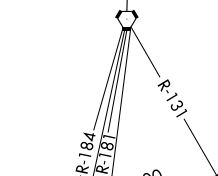


NOTE: Chart not to scale.

BONHAM
114.6 BYP
Chan 93

PARIS
113.6 PRX
Chan 83

TEXARKANA
116.3 TXK
Chan 110



CEDAR CREEK
114.8 CQY
Chan 95

TYLER
114.2 TYR
Chan 89

GREGG COUNTY
112.9 GGG
Chan 76



(CONTINUED ON FOLLOWING PAGE)

(GARL5.TT) 24305
GARLAND FIVE DEPARTURE

AL-6830 (FAA)

ENNIS MUNI (F41)
ENNIS, TEXAS

GARLAND FIVE DEPARTURE



DEPARTURE ROUTE DESCRIPTION

When entering controlled airspace, fly assigned heading for RADAR vectors to appropriate route. Maintain ATC assigned altitude.

GREGG COUNTY TRANSITION (GARL5.GGG): From over TTT VOR/DME on TTT R-094 to ROCKK, then on GGG R-279 to GGG VORTAC.

PARIS TRANSITION (GARL5.PRX): From over TTT VOR/DME on TTT R-064 to ECKEY, then on PRX R-221 to PRX VOR/DME.

SOLDO TRANSITION (GARL5.SOLDO): From over TTT VOR/DME on TTT R-084 to SOLDO.

TEXARKANA TRANSITION (GARL5.TXK): From over TTT VOR/DME on TTT R-074 to SHERO, then on TXK R-244 to TXK VORTAC.

TYLER TRANSITION (GARL5.TYR): From over TTT VOR/DME on TTT R-094 to ROCKK, then on TYR R-303 to TYR VOR/DME.

SC-2, 28 NOV 2024 to 26 DEC 2024

SC-2, 28 NOV 2024 to 26 DEC 2024