

WAAS CH <b>86301</b> <b>W17A</b>	APP CRS <b>169°</b>	Rwy Idg <b>5898</b> TDZE <b>1665</b> Apt Elev <b>1670</b>
--	------------------------	---

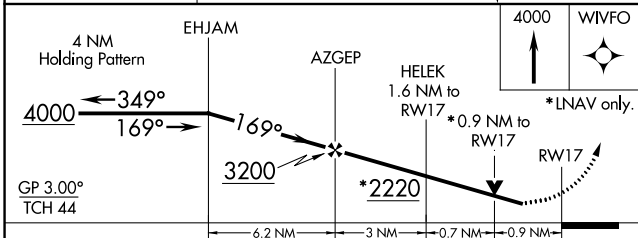
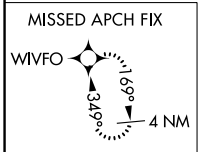
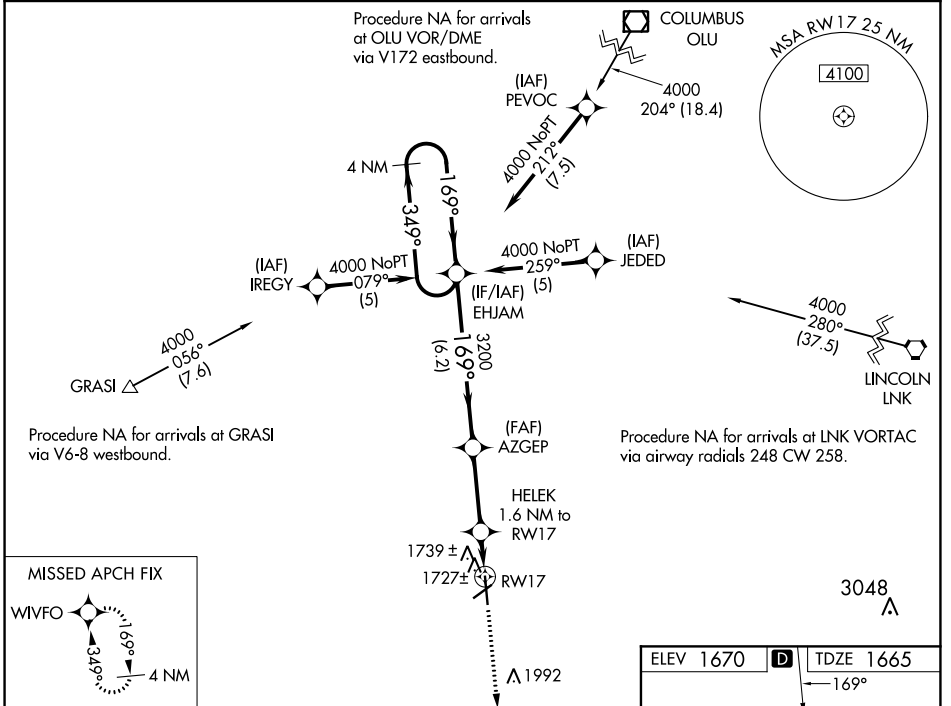
# RNAV (GPS) RWY 17

YORK MUNI (JYR)

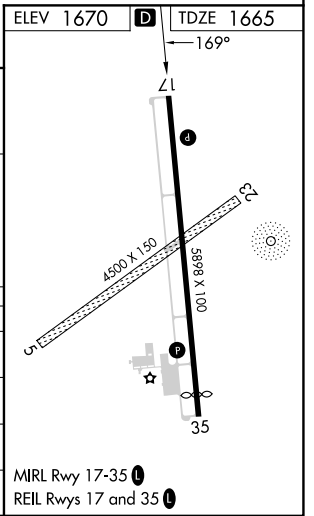
**⚠** For uncompensated Baro-VNAV systems, LNAV/VNAV NA below -18°C (0°F) or above 54°C (130°F). DME/DME RNP-0.3 NA. Visibility reduction by helicopters NA. When local altimeter setting not received, use Aurora altimeter setting and increase all DA/MDA 60 feet and all LPV and LNAV/VNAV visibility ¼ mile. VDP and Baro-VNAV NA when using Aurora altimeter setting.

**MISSED APPROACH:**  
Climb to 4000 direct WIVFO and hold.

AWOS-3 <b>124.175</b>	MINNEAPOLIS CENTER <b>119.4 278.8</b>	UNICOM <b>122.8 (CTAF) Ⓛ</b>
--------------------------	--	---------------------------------



CATEGORY	A	B	C	D
LPV DA	1915-3/4	250 (300-3/4)		NA
LNAV/VNAV DA	2031-1 1/4	366 (400-1 1/4)		NA
LNAV MDA	2000-1	335 (400-1)		NA
CIRCLING	2060-1 390 (400-1)	2180-1 510 (600-1)	2200-1 1/2 530 (600-1 1/2)	NA



NC-2, 28 NOV 2024 to 26 DEC 2024

NC-2, 28 NOV 2024 to 26 DEC 2024