

WAAS CH 65933 W02A	APP CRS 018°	Rwy Idg TDZE Apt Elev	3554 876 878
--	------------------------	-----------------------------	---

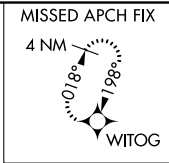
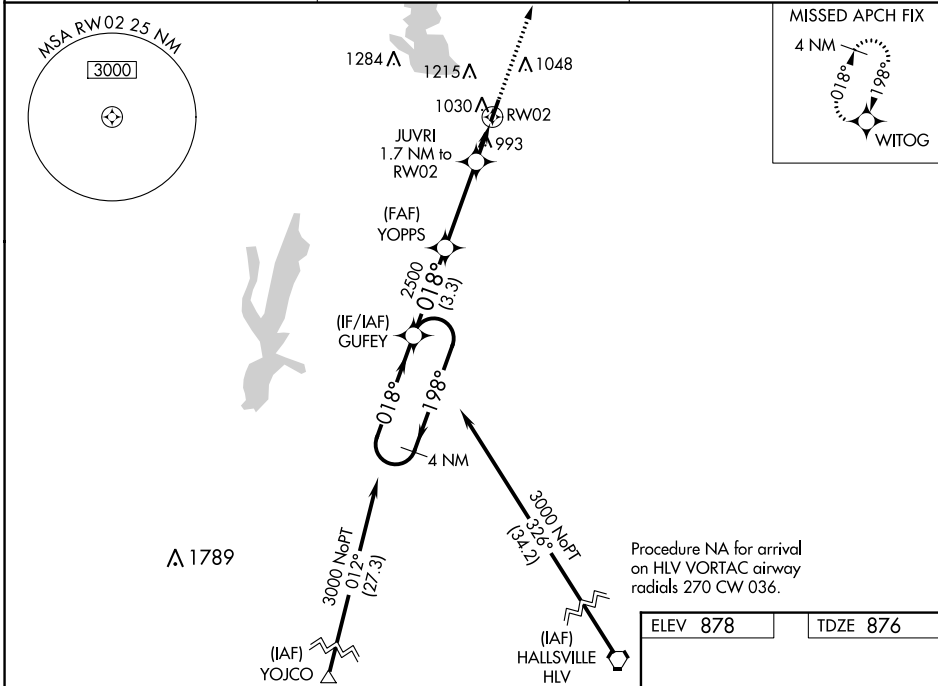
RNAV (GPS) RWY 2

MACON-FOWER MEML (K89)

NA DME/DME RNP-0.3 NA. Use Moberly altimeter setting; when not received use Columbia altimeter setting and increase all DA 91 feet and all MDA 100 feet and increase LPV all Cats and LNAV/VNAV all Cats visibility ¼ mile. Helicopter visibility reduction below ¾ SM NA. Night Landing: Rwy 20 NA. Baro-VNAV NA.

MISSED APPROACH: Climb to 2700 direct WITOG and hold.

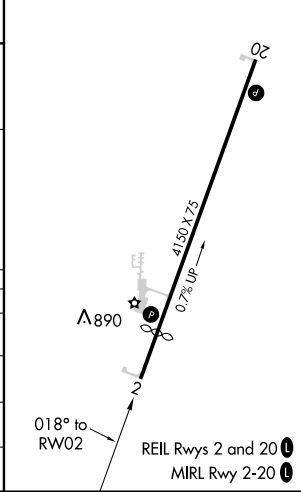
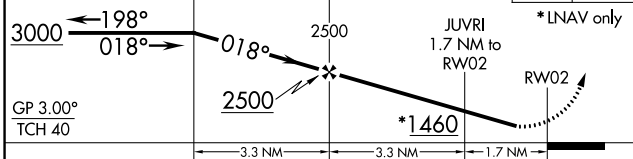
MBY AWOS-3PT 120.025	KANSAS CITY CENTER 125.25 235.975	UNICOM 122.8 (CTAF) 0
--------------------------------	---	---------------------------------



Procedure NA for arrival on HLV VORTAC airway radials 270 CW 036.

ELEV 878	TDZE 876
----------	----------

4 NM Holding Pattern GUFUEY
 VGSI and RNAV glidepath not coincident (VGSI Angle 3.00/TCH 31).
 2700 WITOG
 *LNAV only



CATEGORY	A	B	C	D
LPV DA	1165-1	289 (300-1)		NA
LNAV/VNAV DA	1309-1½	433 (500-1½)		NA
LNAV MDA	1320-1	444 (500-1)		NA
C CIRCLING	1400-1 522 (600-1)	1560-1 682 (700-1)		NA

NC-3, 28 NOV 2024 to 26 DEC 2024

NC-3, 28 NOV 2024 to 26 DEC 2024