

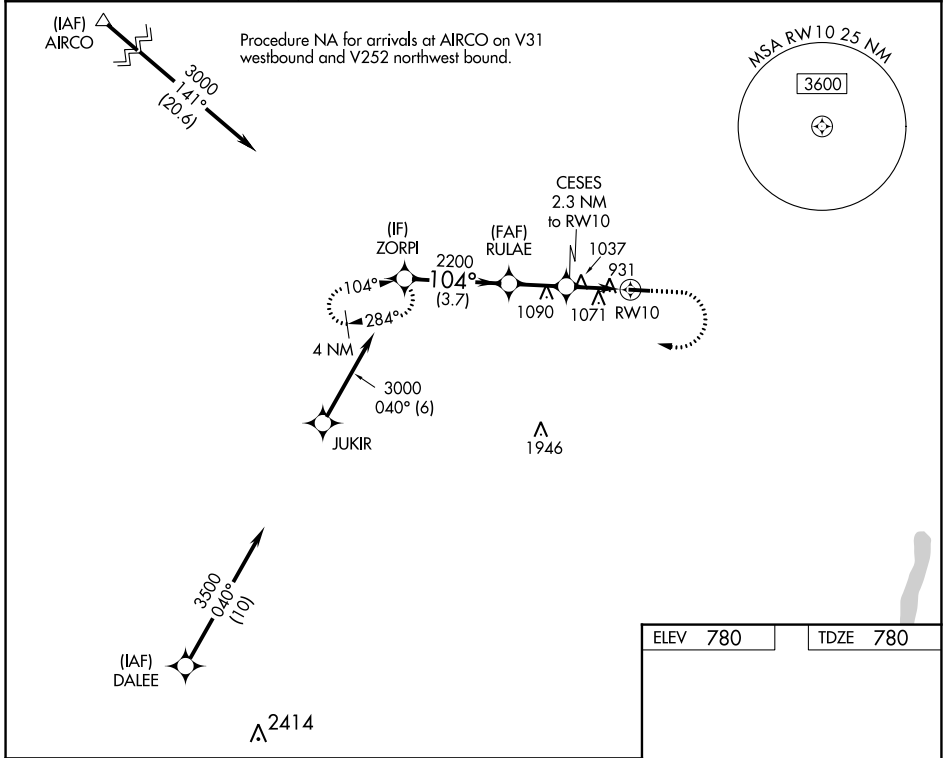
WAAS CH 61030 W10A	APP CRS 104°	Rwy Idg TDZE Apf Elev	3854 780 780
--	------------------------	-----------------------------	---

RNAV (GPS) RWY 10

LE ROY (5GⓈ)

RNP APCH-GPS.		MISSED APPROACH: Climb to 1500 then climbing right turn to 3000 direct ZORPI and hold.
Procedure NA at night. Rwy 10 helicopter visibility reduction below 1 SM NA. Use Rochester altimeter setting.		

ROC ASOS 124.825	ROCHESTER APP CON 123.7 322.3	UNICOM 122.8 (CTAF) 0
----------------------------	---	---------------------------------



ELEV 780		TDZE 780	
ZORPI 3000		ZORPI	
104°		104°	
RULAE		RULAE	
CESES 2.3 NM to RW10		CESES 2.3 NM to RW10	
3.00° TCH 31		3.00° TCH 31	
RW10 1540		RW10	
3.7 NM		2.1 NM	
2.3 NM		2.3 NM	
CATEGORY	A	B	C
LP MDA	1360-1	580 (600-1)	NA
LNAV MDA	1400-1	620 (700-1)	NA
MIRL Rwy 10-28 0		REIL Rwy 10 and 28 0	

NE-2, 28 NOV 2024 to 26 DEC 2024

NE-2, 28 NOV 2024 to 26 DEC 2024